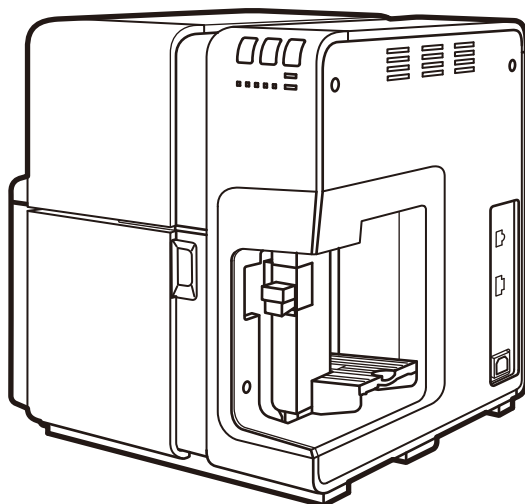


swiftcolor **SCC-4000D**

START GUIDE



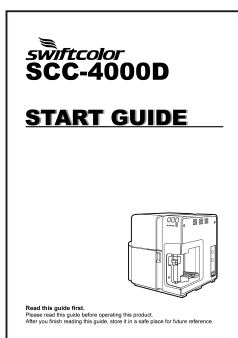
Read this guide first.

Please read this guide before operating this product.

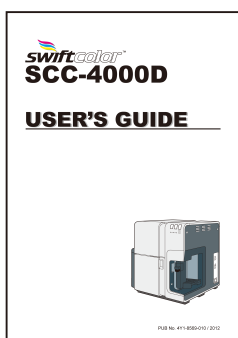
After you finish reading this guide, store it in a safe place for future reference.

About the Instruction Manuals

- The instruction manuals for this printer consist of the following.



START GUIDE (This Manual)



USER'S GUIDE

It is included in a Printer Software CD-ROM.

- Please read before use of the printer. This START GUIDE contains precautions for safe operation and instructions for preparations necessary before using this printer (such as instructions on installing the printer driver).
- The USER'S GUIDE is in PDF format. It contains specific instructions on operation, daily maintenance, and troubleshooting.
- Adobe Reader must be installed to view USER'S GUIDE. If Adobe Reader is not installed in the computer in use, download it from the homepage of Adobe Systems Incorporated and install it in the computer.

About the Printer Software CD-ROM

The CD-ROM supplied with the printer contains User's Guide and the printer driver. Please read this guide for instructions to install the printer driver.

Table of Contents

Table of Contents	1
Before You Begin.....	2
Conventions	2
Illustrations and Sample Screens.....	2
Trademarks	2
Abbreviations	3
Request to the Customer	3
Legal Notice	4
Safety Warnings and Precautions	6
Check on the Bundled Items	13
Before Using the Printer	14
Printer Part Names and Functions	14
Front View	14
Left Side /Rear View	16
Inside the Printer.....	17
Operation panel	18
Installing Software	20
Operating Environment	20
Installing the Printer Driver	21
Using the Printer Via a USB Cable	21
Using the Printer Via a LAN Cable	26
Installing the User's Guide	33
Reading the User's Guide	35
Paper Loading Procedure	36
For the use of Plastic Card	40
Specifications	43

Before You Begin

Conventions

The following marks are used in this guide.



Warning

Indicates a warning concerning operations that may lead to death or injury to persons if not performed correctly. To use the machine safely, always pay attention to these warnings.



Caution

Indicates a caution concerning operations that may lead to injury to persons if not performed correctly. To use the machine safely, always pay attention to these cautions.

Important

Indicates operational requirements and restrictions. Be sure to read these items carefully to operate the machine correctly, and avoid damage to the machine or property.

Note

Indicates a clarification of an operation, or contains additional explanations for a procedure. Reading these notes is highly recommended.



Indicates an operation that must not be performed. Read these items carefully, and make sure not to perform the described operations.

Illustrations and Sample Screens

The illustrations and the sample screens of the printer driver settings in this guide were created with Swiftcolor SCC-4000D in Windows 7. The contents of these printer driver screens and instructions are essentially the same as those for Windows Vista and Windows XP; however, explanations are provided when there are minor differences in screen content or procedures.

Trademarks

- Microsoft, Windows and Windows Vista are trademarks of Microsoft Corporation in the United States and/or other countries.
- Adobe and the Adobe logo are trademarks of Adobe Systems, Inc.
- Other brand and product names may be trademarks of their respective companies.

Abbreviations

Throughout this document the following abbreviations are used in text.

- Microsoft Windows 8 is abbreviated as “Windows 8”
- Microsoft Windows 7 is abbreviated as “Windows 7”
- Microsoft Windows Vista is abbreviated as “Windows Vista”
- Microsoft Windows XP is abbreviated as “Windows XP”
- Microsoft Windows is abbreviated as “Windows”

Request to the Customer

- Copying this guide or any part of this guide without permission is strictly forbidden.
- The specifications for this printer as well as the software provided with the printer are subject to change without prior notice.
- We have done our best to make this guide as complete and accurate as possible, and we ask you to contact to the dealer where you purchased the printer if you find any omissions or mistakes in this document.
- We can accept no responsibility for loss or damages resulting from the use of this printer or its software; please accept this before you use the printer.

Legal Notice

■ Legal Limitations on the Usage of Your Product and the Use of Images

- It is illegal to reproduce currency, bills, negotiable securities and other documents prohibited by law. Reproduction of such items may be subject to criminal prosecution.
- It is illegal to reproduce legal certificates, licenses, and certain public and private documents prohibited from reproduction by law. Reproduction of such items may be subject to criminal prosecution.
- Please note that intellectual property protected by copyright may not be reproduced without the express permission of the copyright holder except for personal or household use under limited circumstances.

■ Product Name

SCC-4000D

■ CE

This equipment conforms with the essential EMC requirements of EC Directive. We declare that this product conforms with the EMC requirements of EC Directive at nominal mains input 230 V, 50 Hz although the rated input of the product is 100 to 240 V, 50/60 Hz. Use of shielded cable is necessary to comply with the technical EMC requirements of EC Directive.

■ FCC (Federal Communications Commission)

FCC Part 15 Compliance

NOTE: This equipment has been tested and found to comply with the limits for a Class B digital device, pursuant to part 15 of the FCC rules. These limits are designed to provide reasonable protection against interference in a residential installation. This equipment generates, uses, and can radiate radio frequency energy and, if not installed and used in accordance with the instruction manual, may cause interference to radio communications. However, there is no guarantee that interference will not occur in a particular installation. If this equipment does cause interference to radio or television reception, which can be determined by turning the equipment off and on, the user is encouraged to try to correct the interference by one or more of the following measures:

- Reorient or relocate the receiving antenna.
- Increase the separation between the equipment and receiver.
- Connect the equipment into an outlet on a circuit different from that to which the receiver is connected.
- Consult the dealer or an experienced radio/TV engineer for help.

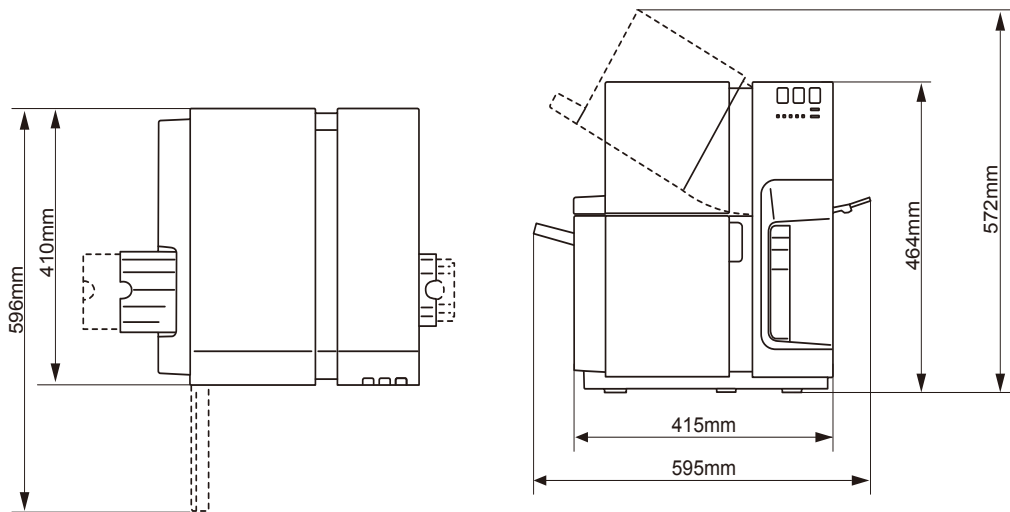
CAUTION: Changes or modifications to this equipment not expressly approved by the party responsible for compliance could void the user's authority to operate the equipment.

Safety Warnings and Precautions

Before using this printer, please read this section ("Safety Warnings and Precautions") thoroughly. Warnings to need and important matters are described here to prevent damages to the user and other persons. Do not attempt to operate this printer in any way other than those mentioned in the User's Guide.

■ Location

Make sure that there is sufficient space around the printer.



Warning

- Never place items on the printer such as a flower vase, potted plant, cosmetics, any liquid filled container, or metal fasteners. If such items were to fall on the printer, this could cause a fire, electrical shock, or damage to the printer.
- The electrical contacts inside the printer become extremely hot during normal operation. To avoid causing a fire, never store flammable substances like alcohol, thinner, etc. near the printer.

Caution

- Avoid using the printer in the following types of locations.
 - Where the printer is exposed to open air or high humidity. This could cause a fire, serious electrical shock, or damage to the printer. Also, if the printer is carried into a warm room on a cold day, this could cause condensation inside the printer. If this happens, allow the printer to sit for at least 1 hour at room temperature to adapt to the ambient temperature and humidity.
 - Never place the printer on a slanted or unstable stand or table. If the printer is dropped or slide off, this could cause personal injury. Also, never place a heavy object on top of the printer. If the object is dropped or falls, this could cause personal injury.
 - Never expose the printer to open air or dust. This could cause a fire, serious electrical shock, or damage to the printer. Also, never locate the printer near a water faucet or in any other location where it will be exposed to water. This could cause serious electrical shock.
- Never place the printer where it will be exposed to rapid changes in temperature, such as in direct sunlight, near an air conditioner, on a hot day.
This could cause a fire or damage to the printer.
- Place the printer in a location that meets the specified ranges of temperature and humidity. If the printer is either too cold or too hot, it may not operate normally.
Operating environment: 15 - 30 degrees Celsius (59 - 86 degrees Fahrenheit) RH 10 - 80% (with no condensation)
- To ensure normal operation of the printer and avoid possible damage, never install the printer near large office equipment or any other type of electrical device that emits a strong magnetic field.
- Never block the ventilation ports on the printer. A blocked ventilation port could cause heat to build up inside the printer and cause a fire. Also, place the printer in an area where you can disconnect the power cord immediately; keep the area around the power cord connection free of obstacles. This allows you to unplug the power cord quickly in an emergency.

■ Power Supply and Power Cord

Warning

- To avoid causing a fire or serious electrical shock, always use the power cord provided with this printer. To avoid a fire or electrical shock, do not use an extension cord.
- To avoid a fire or serious electrical shock, connect the printer power cord to an independent power source that is not shared by other equipment or appliances.
- To avoid causing a fire or serious electrical shock, make sure that the power plug is securely and completely inserted into the power source.
- Do not cut, damage, or otherwise alter the power cord. To avoid the dangers of fire and electrical shock, never place a heavy object on the power cord, never expose it to heat, and never pull on the cord to disconnect it. If the power cord is damaged in any way (condensation on exposed wires, broken wires, etc.) contact the dealer where you purchased the printer or the nearest service center for a replacement.
- To avoid personal injury from an electrical shock, never handle the power cord or plug when your hands are wet.
- To avoid a fire or serious electrical shock, never knot the power cord or wrap it around itself.
- Disconnect the printer power cord during severe electrical storms. Lightning could cause a fire or severe electrical shock or damage to the printer.
- To avoid a fire hazard, occasionally disconnect the power cord from the

printer and the power supply and use a soft dry cloth to clean the cord connectors and the connection points. Leaving the cord plugged in and not cleaned for a long period, especially in an area subject to dust, oil, and high humidity, could cause the insulation material to deteriorate.

Caution

- Be sure to turn off the power of printer before unplugging the power cable.
- Check the power plug and cord for any problem (abnormal heat, rust, bend, cracks, scratches, etc.) at least once a month.
- If any problem with the power plug or cord is found, ask the distributors to replace it. (Using it without replacement can result in a fire or electric shock hazard.)
- To avoid damaging the power plug, which could cause a short circuit and cause a fire or electrical shock, never pull on the power cord to unplug the cord from the power supply. Always grip the plug to remove it from the power supply.
- If the printer will not be used for a long period, for your safety disconnect the power cord from the power source.
- Always keep the area around the power plug free of obstacles so you can unplug it easily. This allows you to unplug the power cord quickly in an emergency.
- Never use any power source other than the one rated for the printer. This printer is designed to be used in the region where you purchased. Also, make sure that the power source can supply sufficient power for the printer. This could cause a fire or serious electrical shock,

or damage the printer.

Supply Voltage: AC 100 - 240 V, 50/60 Hz

Maximum power: 229 W (max.) or less

Sleep mode: 8.5 W or less

Important

- When turning off the printer, press and hold the [Power] key to turn it off while the printer is in idle state.

■ Handling the Printer and Accessories

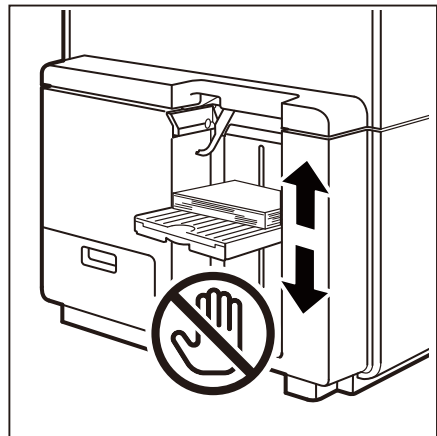
Warning

- If you find a large ink leak, turn the printer off immediately, disconnect the power plug from the power source, and call for service. If you continue to use the printer, this could cause a fire or serious electrical shock.
- Never clean the printer with water or any flammable liquid (alcohol, benzene, thinner, etc.) either applied directly or with a cloth. If you accidentally spill liquid on the printer, turn the printer off immediately, disconnect the power plug from the power source, and call for service. If you continue to use the printer, this could cause a fire or serious electrical shock.
- If the printer emits smoke, unusual odors, or makes noises, leaving it could cause a fire or serious electrical shock or damage to the printer. Turn the printer off immediately, disconnect the power plug from the power source, make sure that the printer has stopped smoking, and call for service. Do not attempt to repair the printer by yourself. This could cause a fire or serious electrical shock.
- Use only a slightly damp cloth, thoroughly wrung out, to clean the printer surfaces. Never use alcohol, thinner or any other flammable liquids. If such materials come into contact with electrical components inside the printer, this could cause a fire or serious electrical shock.

Safety Warnings and Precautions

Caution

- There are high voltage points inside the printer. To avoid a fire or electrical shock, never attempt to disassemble or repair the printer.
- Never insert or drop any metal objects into the printer when it is open. This could cause a fire or serious electrical shock, or damage the printer. If something falls into the printer accidentally, turn the printer off immediately, disconnect the power plug from the power source, and call for service. If you continue to use the printer, this could cause a fire or serious electrical shock.
- If the printer is dropped and damaged, switch the printer off immediately, disconnect the power plug from the power source, and call for service. If you continue to use the printer, this could cause a fire or serious electrical shock.
- To avoid a fire or electrical shock, never use flammable sprays around the printer.
- Never remove the cover from the printer. This could cause a serious electrical shock.
- It is dangerous to put your fingers deep inside the ink cartridge boxes. There are pin-sharp parts which may hurt you or alternatively you may cause damage that will lead to breakdown.
- Keep children from touching the power cord, internal parts of the printer when it is open, and moving parts inside the printer (gears, belts, rollers, and electrical components). This could cause personal injury or damage the printer.
- Do not touch the feeder lift tray while it is in operation. In addition, do not insert your finger or any object under the tray. An injury or failure can result.



Important

- To prevent machine failures, do not open the ink tank door or maintenance cartridge exchange door, do not turn off the printer, and do not remove the power plug from the outlet while the printer is printing. If you do so, the print head protection function is not performed properly, resulting in a machine failure or ink leakage which can soil your clothes and the surrounding area.
- Do not apply excessive force or strong shock to the upper unit. Doing so can result in a machine failure or impair print quality. Be sure to open/ close the upper unit slowly.
- Do not place the printer close to TV, radio receiver or loudspeakers, etc. The magnetic field produce may cause the printer to malfunction, or the printer may interfere with TV/radio reception.

■ Moving the Printer

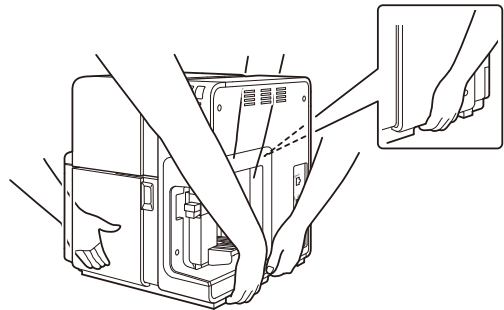
! Warning

- Call the dealer for advice before you ship the printer a long distance or move the printer by car or truck where it may be subjected to shock and vibration. Moving the printer without the proper preparation could subject it to shocks and vibrations which could damage the printer and cause a fire.

! Caution

- Before you move the printer to another location in the same building, disconnect the power cord and make sure that all other cables are disconnected.

- This product weighs about 25kg. Two persons standing at the front and back of the printer must lift the printer while holding the left and right handles provided at the bottom of the printer. If you lift the printer in an unnatural posture, you may drop it, resulting in an injury. In addition, if you hold the stacker section or auto stacker (paper eject section), you may damage it or drop the printer, resulting in an injury.



- Always hold the printer level and carry it slowly. If ink is spilled inside the printer while moving it, this could cause a fire or serious electrical shock or damage the printer.

Important

- To prevent machine failures, do not relocate or transport this printer with the upper unit open.

■ Ink Tank and the Maintenance Cartridge

Caution

- Always store these items out of the reach of small children. This prevents accidents. If a child accidentally swallows ink, seek medical attention immediately.
- If ink gets into your eyes, wash it out with flowing water immediately. If irritation persists, consult a physician.
- If ink comes into contact with your skin, rinse it off with flowing water immediately. If irritation persists, consult a physician.
- Never drop or apply excessive force to an ink tank or the maintenance cartridge. Ink can stain clothing and the work area.
- Never attempt to disassemble or modify the ink tanks. They contain ink, which may leak out and smear your clothes or things around you.

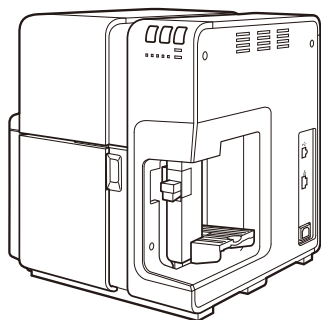
Important

- Do not install or remove the ink tank or maintenance cartridge unless it needs to be replaced. Doing so can accelerate wear of the printer components.

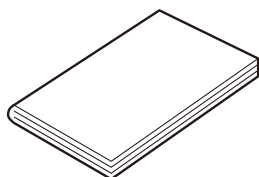
Check on the Bundled Items

Check that the following items are included.

- Printer



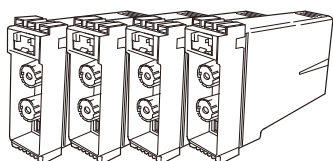
- Start Guide



- Printer Software CD-ROM

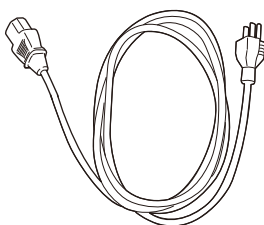


- Starter Ink Tank*

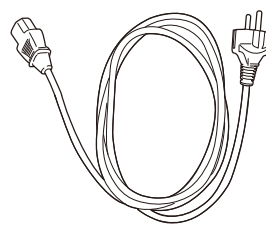


(Black, Cyan, Magenta, Yellow)

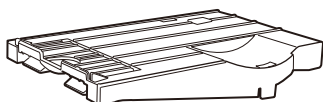
- Power Cord for 120V series*



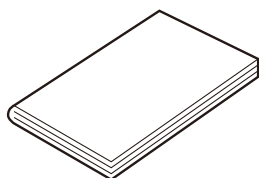
- Power Cord for 230V series*



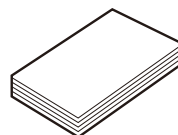
- Additional Tray**



- Installation Procedure*



- Papers for test print*



* The parts with an asterisk (*) will be used for the installation.

** Additional Tray is needed when print Plastic Card. Attach it to Auto Stacker before start to print Plastic Card.

Note

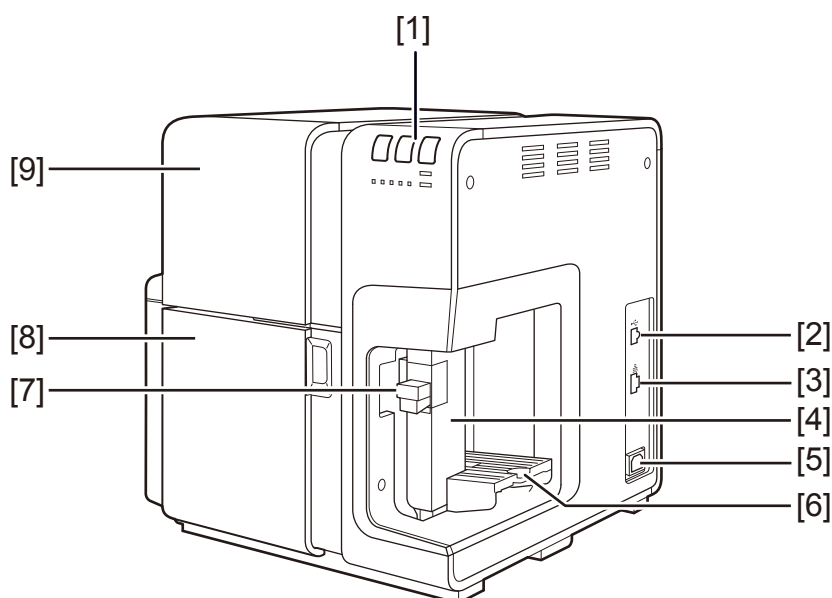
- USB cable and LAN cable are not included. Prepare commercially sold cables suitable for your computer in use.
- Because starter ink tanks only have a small amount of ink, early purchase of replacement ink tanks is recommended.

Before Using the Printer

Printer Part Names and Functions

The name and function of each part is described below.

■ Front View



[1] Operation panel

Keys necessary for operation and lamps to indicate the state of printer are provided on this panel.

[2] USB port

Connect a USB cable here to connect to the computer.

[3] LAN port

Connect a LAN cable here to connect to the computer.

[4] Side guide

Adjust the position of this guide according to the paper width.

[5] Power socket

Connect the power cord here.

[6] Feeder lift tray

Load the paper.

[7] Side guide lever

Use this lever to move the side guide.

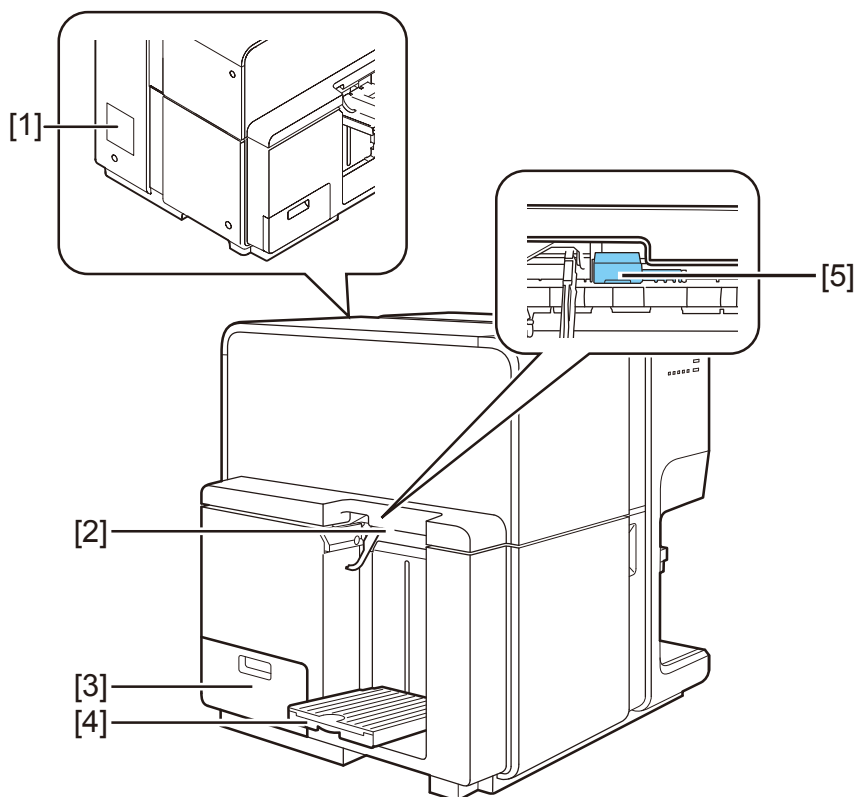
[8] Ink tank door

Open this door when replacing ink tanks or opening the upper unit.

[9] Upper unit

Open this unit when setting paper or removing the paper jammed in the paper feed path or cleaning inside of the machine. Holds the printhead.

■ Left Side /Rear View



[1] Rating plate

A serial number for identifying the printer is shown on this plate. (The serial number is required when you ask for repair of the printer.)

[2] Paper delivery slot

Paper is ejected through this slot.

[3] Maintenance cartridge door

Open this door when replacing the maintenance cartridge.

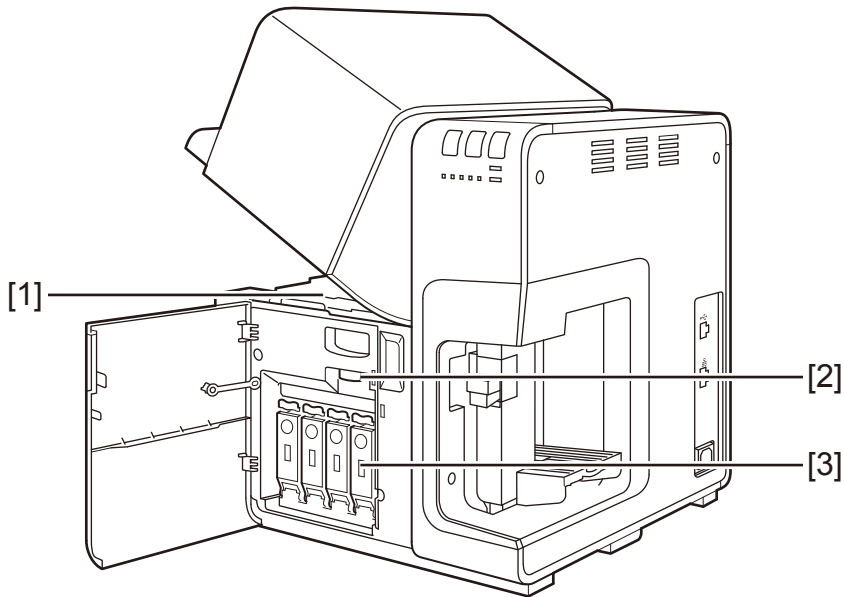
[4] Auto stacker

Receives printed paper output from the printer.

[5] Thick paper transport lever

Pull out this lever to use the special heavy paper.

■ Inside the Printer



[1] Transport area

Transports paper. Clean here if paper dust and ink stains.

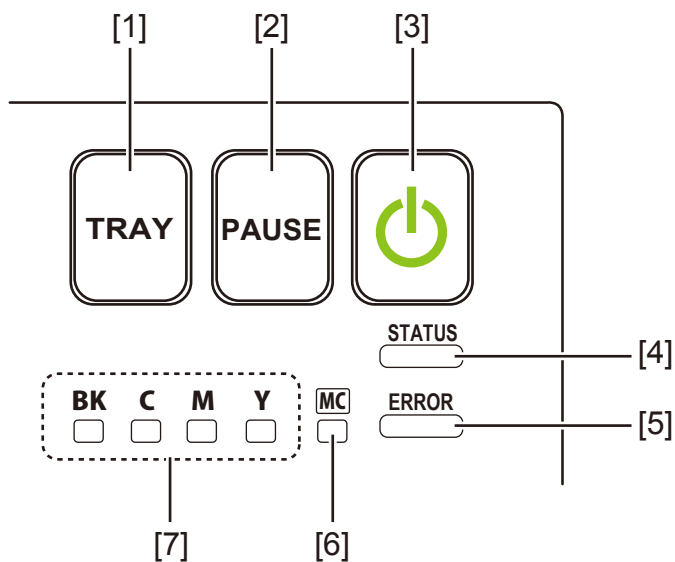
[2] Upper unit open lever

Open the Upper unit.

[3] Ink tank

Load Black (Bk), Cyan (C), Magenta (M) and Yellow (Y) ink tanks from left.

■ Operation panel



[1] TRAY key

Use this key to move the feeder tray upward/downward.

[2] PAUSE key

Printing Pressing this key suspends printing.

in pause Pressing this key restarts printing.

[3] Power key/lamp

On Power-on.

Blinking Sleep mode.

Off Power-off.

[4] STATUS lamp

On Online mode.

Blinking Data being received. (Check the Status Monitor on the computer.)

Off Offline mode. (Check the Status Monitor on the computer.)

[5] ERROR lamp

On	Operator-call error. (Check the Status Monitor on the computer.)
Blinking	Fatal error. (Check the Status Monitor on the computer.)
Off	Normal.

[6] Maintenance cartridge warning lamp

On	Full.
Blinking	Nearly full.
Off	Sufficient room to collect ink.

[7] Ink warning lamp

These lamps indicate the remaining amounts of Black (Bk), Cyan (C), Magenta (M) and Yellow (Y) inks.

On	No ink or tank.
Blinking	Low ink.
Off	Sufficient ink.

Important

- Opening the ink tank door or maintenance cartridge door during printing causes an error and suspends printing. This could result in a failure. Do not open the ink tank door or maintenance cartridge door except when replacing an ink tank or maintenance cartridge or opening/closing the upper unit.
- Never attempt to open the upper unit by force or hit the upper unit. This could damage the printer or result in poor print quality. Always open and close the upper unit slowly.

Installing Software

After installing this printer at the installation site, install the printer driver in the computer. The accessory “Printer Software CD-ROM” contains the printer driver and User’s Guide. Install the printer driver, and for User’s Guide, install it as needed.

Operating Environment

The printer driver, User’s Guide, can be used in the following environment:

- Operating system (OS)
 - Windows 8 (32bit / 64bit)
 - Windows 7 (32bit / 64bit)
 - Windows Vista (32bit / 64bit)
 - Windows XP (32bit / 64bit)
- Computer
 - Recommended spec: Computer on which the operating system above can run.
- Hard disk space
 - Hard disk space required for installation (including the space used temporarily):
 - Printer driver: 50 MB or more
 - User’s Guide: 25 MB or more

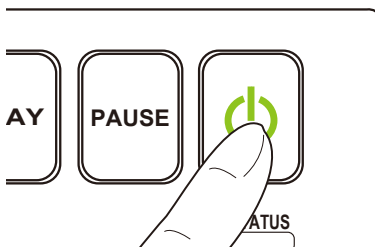
Installing the Printer Driver

This printer can be connected to the computer via a USB cable or network. Select either method according to the environment where the printer is used.

■ Using the Printer Via a USB Cable

- This printer is compatible with Hi-Speed USB.
- A USB cable does not come with this printer. Use a commercially available USB cable that is compatible with your computer.
- Do not connect the USB cable before installing the printer driver. After starting installation of the printer driver, connect the USB cable according to the message shown on the display.

- 1 If the printer is already turned on, press and hold the power key until alarm sounds. Then release the power key to turn the printer off.



- 2 If the printer is connected to the computer via USB cable, disconnect the USB cable.

- 3 Turn on the power of computer and log in the computer as the user with Administrator authority.

Important

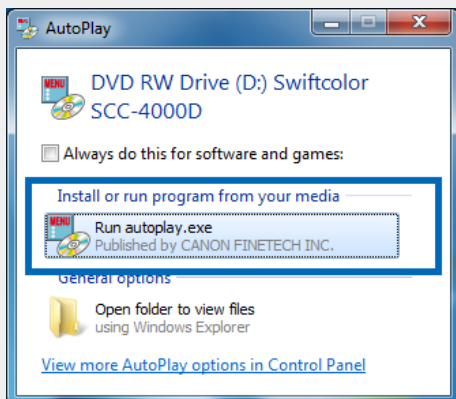
- To install the guide, it is necessary to log in the computer as the user with Administrator authority. In addition, only have the user with Administrator authority have log in status.
- Have Anti-virus programs and other resident programs closed in advance.

- 4 Set the "Printer Software CD-ROM" in the computer.

Installing Software

Note

- If the following window appears, click “Run autoplay.exe.”



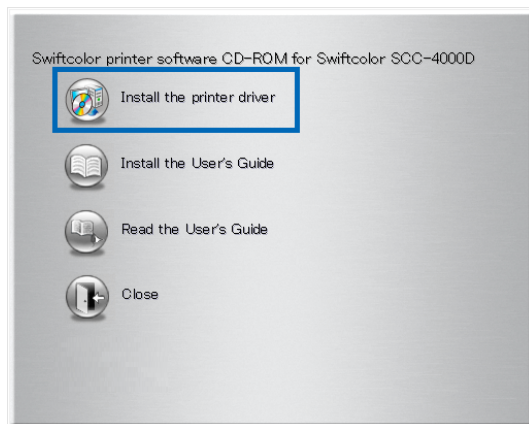
- A user account control dialog box may appear. In this case, click [Continue] or [Yes].
- The installation start window may not appear depending on the CD-ROM drive auto run setting. In this case, go through the following.

Steps:

1. Open the “Start” menu and then select “My Computer” (or “Computer”).
2. Double-click the CD Drive icon.
3. Double-click “autoplay.exe.”

5

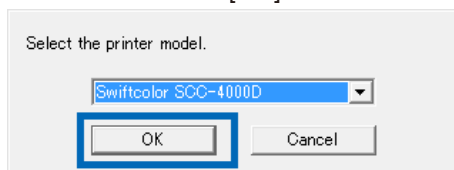
Click “Install the printer driver.”



6

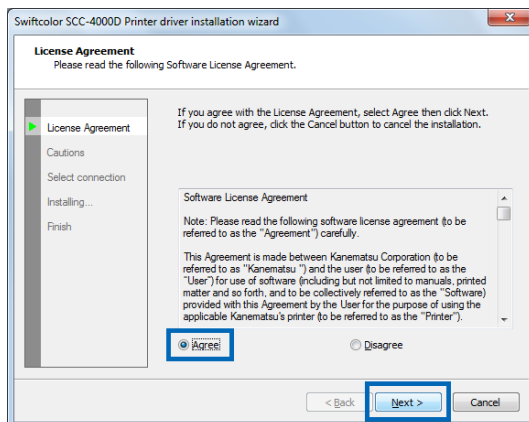
Select the model of the printer.

Confirm the [Swiftcolor SCC-4000D] selected and click [OK].

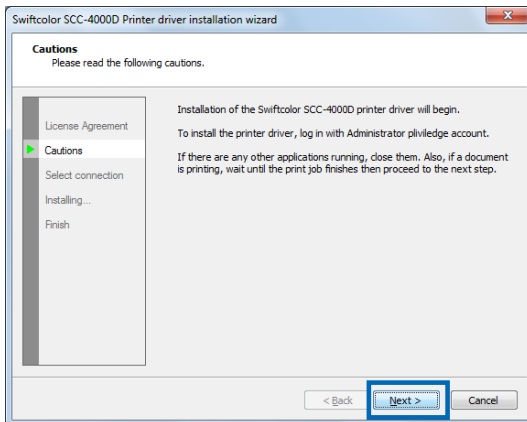


7

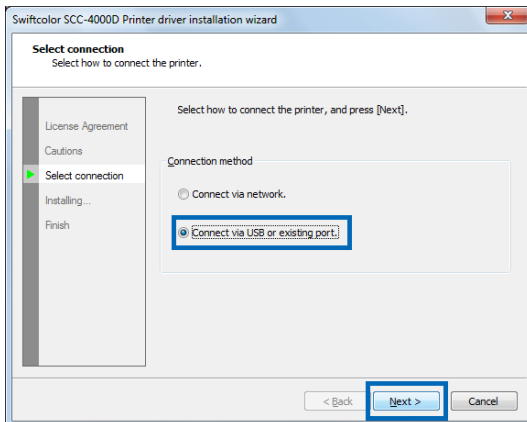
Read the software license agreement, select [Agree], and then click [Next].



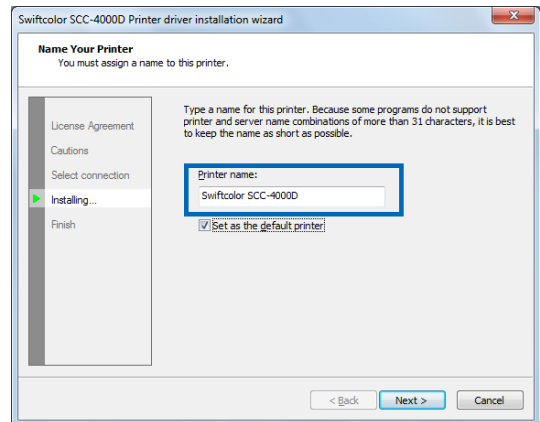
- 8** Read the Cautions well and then click [Next].



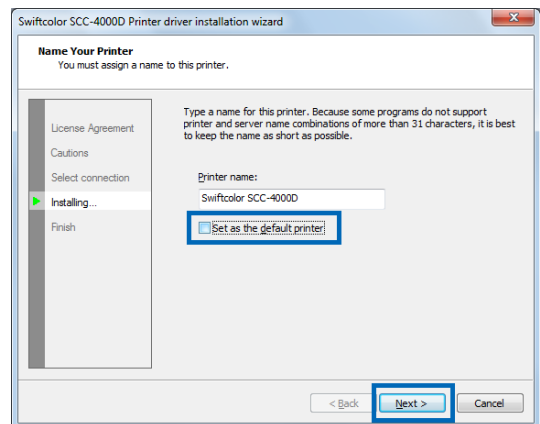
- 9** Select "Connect via USB or existing port" and then click [Next].



- 10** To change the printer name, enter a new printer name in "Printer name."

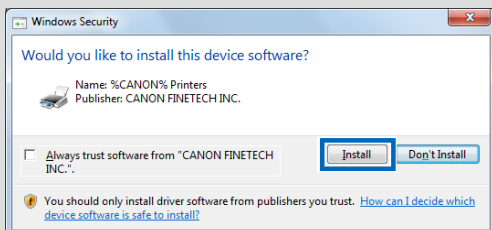


- 11** When not set as the default printer, uncheck the checkbox then click [Next].

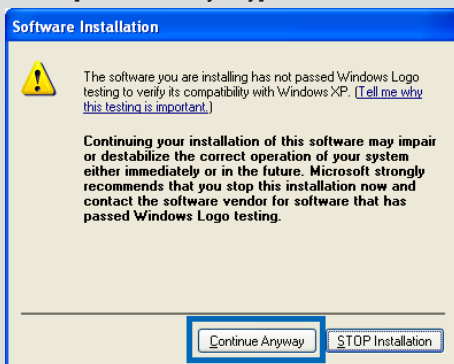


Important

[Windows Security] dialog box will appear. Then, click [install].

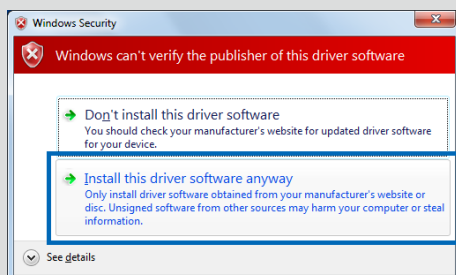


- Windows XP
Click [Continue Anyway].

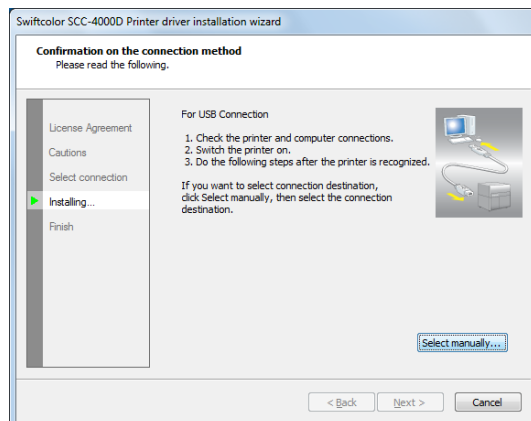


[Windows Vista]

In case there is no internet connection, the following [WindowsSecurity] message will appear. Then, click [install this printer driversoftware anyway]



- 12** When the next window is displayed, turn on the printer and connect computer and printer with USB cable.



If the printer is successfully recognized by Windows, installation of the printer driver continues.

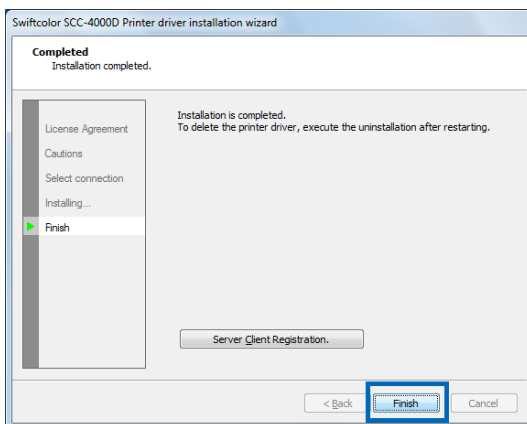
Note

- If the computer, which is connected to the printer by USB cable, is linked to a network, it may take some time to recognize the printer.
- If you would like to select the connection destination by yourself, click [Select manually...] and select the connection port.

Important

- The USB cable is hot-swappable. However, it should be noted that the USB cable should not be connected or disconnected in the following cases:
 - When the computer is being booted (before the desktop appears)
 - When the printer is printing
 - When the printer driver is being installed
- When disconnecting the USB cable with the computer or printer powered, be sure to remove the USB plug on the computer side (USB hub side) in advance. When reconnecting the USB cable, wait for at least 5 seconds after disconnecting it. If you connect the USB cable too early, the printer may malfunction.

13 Click [Finish].

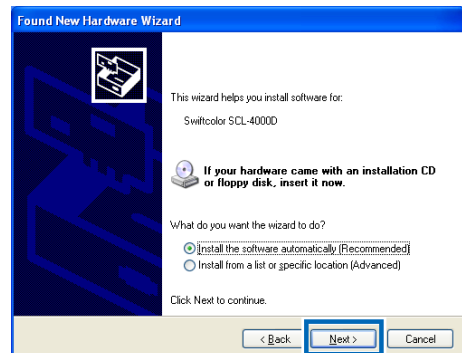


[Windows XP]

1. Select [No, not this time] and click [Next].



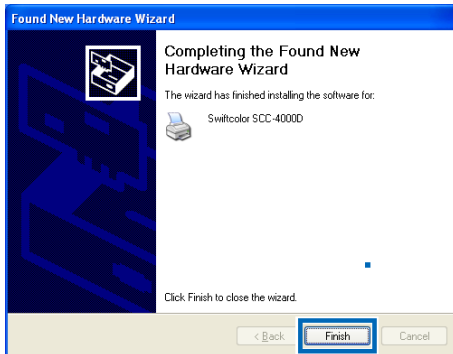
2. Select "Install the software automatically [Recommended]" and then click [Next].



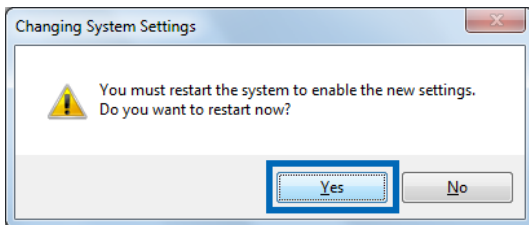
Note

- A Windows Security dialog box may appear. In this case, click [Continue Anyway].

3. Click [Finish].



14 Eject CD-ROM and click [Yes].



Note

- If you select [No], be sure to restart Windows before using the printer.

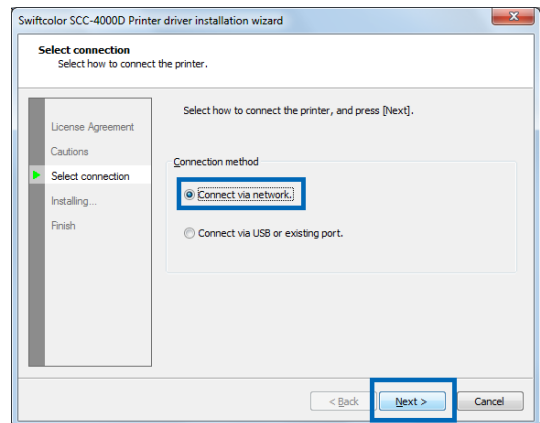
With that, installation of the printer driver via a USB cable is completed.

■ Using the Printer Via a LAN Cable

- A LAN cable does not come with this printer. Use a commercially available LAN cable that is compatible with your computer.
- When connecting to in-house LAN, consult the network administrator.
- Have the power of printer turned on before connecting to LAN.

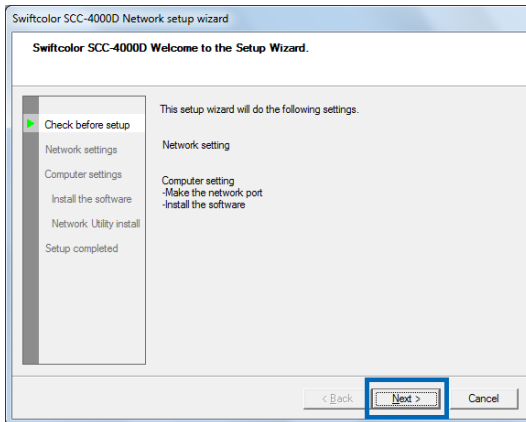
1 Go through steps 1 to 8 of the procedure for using the printer via a USB cable.

2 Check the “Connect via network” and then click [Next].

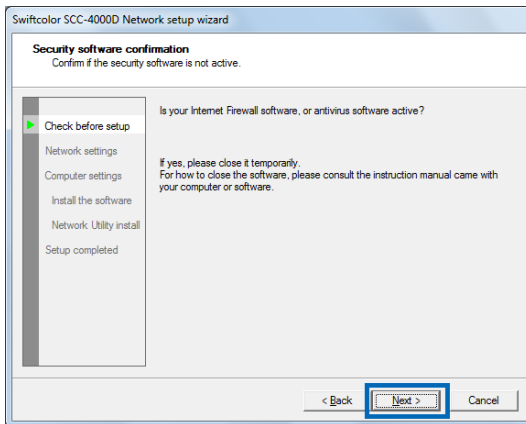


The Network setup wizard appears.

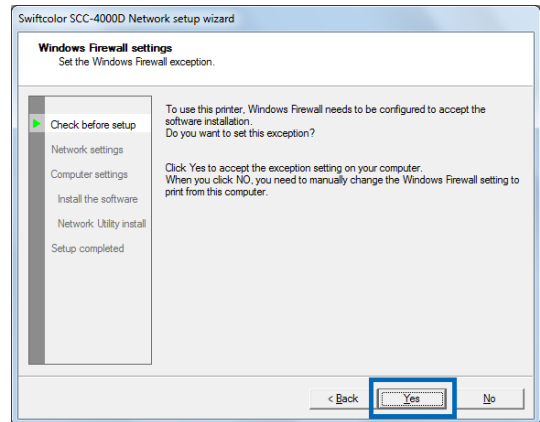
3 Click [Next].



4 Click [Next].

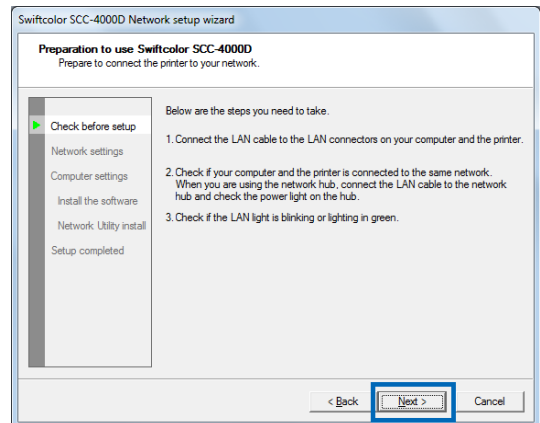


5 Click [Yes].



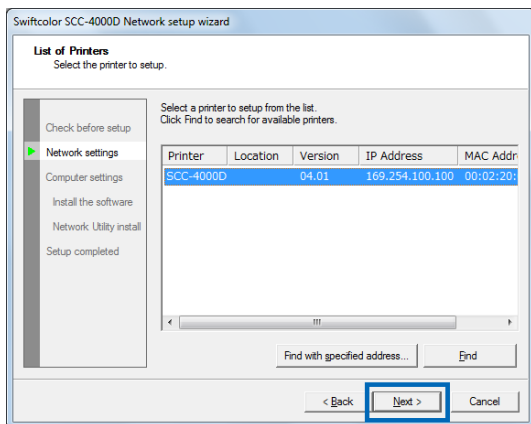
6 Connect LAN cable for the printer when the below window is displayed.

Click [Next].



The setup wizard will search for the printer on the network.

- 7** When [Swiftcolor SCC-4000D] is found, select it and click [Next].



Important

- If nothing is displayed when searching for the printer, contact the network administrator.

If nothing is displayed when searching for the printer, the possible causes are as follows:

- The [SCC-4000D] and computer are installed on different networks. Accordingly, the [SCC-4000D] cannot be recognized by the computer.
- Regarding network operation, it may be impossible to join the network if the predetermined IP address has not been set.

In the above-described cases, first assign Printer the IP address.

Connect the printer on the network on which the computer subject to printer driver is installed, and then assign Printer the IP address. Or install the printer driver in the computer on the network on which the printer is to be installed, and then set the IP address.

After setting the IP address, retry network search.

When setting the IP address manually, refer to "NOTE" on page 31.

8 Check the “Have an IP address automatically” and click [Next].

Swiftcolor SCC-4000D Network setup wizard

Network (IP Address) setting
Set an IP address to the printer.

Check before setup
☒ Network settings
 Computer settings
 Install the software
 Network Utility install
 Setup completed

You use this wizard to set IP address of the printer.
 When there is a device on your network having the DHCP server function, you can get an IP address automatically by selecting [Have an IP address automatically].
 When you already have an IP address to use, do not select [Have an IP address automatically], and directly type the IP address.

☒ Have an IP address automatically

IP Address: 169 . 254 . 100 . 100

Subnet mask: 255 . 255 . 0 . 0

Default gateway: 169 . 254 . 100 . 100

< Back Next > Cancel

Note

- If there is an equipment having DHCP server function on the network, checking the "Have an IP address automatically" checkbox acquires IP address automatically.

9 Verify the content and click [Next].

Swiftcolor SCC-4000D Network setup wizard

Confirm the settings.
Confirm the settings which was changed.

Check before setup
☒ Network settings
 Computer settings
 Install the software
 Network Utility install
 Setup completed

You are setting the printer as follows. What will be changed is shown in red.
 Click Next to confirm. If you want to change the settings, click Back.

Printer: SCC-4000D

Network settings	Content
Have an IP address automatically:	Yes
IP Address	169.254.100.100
Subnet mask	255.255.0.0
Default gateway	169.254.100.100

< Back Next > Cancel

Note

- If you would like to set a specific IP address, uncheck "Have an IP address automatically" checkbox and directly enter IP address.

Swiftcolor SCC-4000D Network setup wizard

Network (IP Address) setting
Set an IP address to the printer.

Check before setup
☒ Network settings
 Computer settings
 Install the software
 Network Utility install
 Setup completed

You use this wizard to set IP address of the printer.
 When there is a device on your network having the DHCP server function, you can get an IP address automatically by selecting [Have an IP address automatically].
 When you already have an IP address to use, do not select [Have an IP address automatically], and directly type the IP address.

☐ Have an IP address automatically

IP Address: 169 . 254 . 100 . 100

Subnet mask: 255 . 255 . 0 . 0

Default gateway: 169 . 254 . 100 . 100

< Back Next > Cancel

- Clicking [Next] displays the network settings confirmation window. Check that settings are correct.

Swiftcolor SCC-4000D Network setup wizard

Confirm the settings.
Confirm the settings which was changed.

Check before setup
☒ Network settings
 Computer settings
 Install the software
 Network Utility install
 Setup completed

You are setting the printer as follows. What will be changed is shown in red.
 Click Next to confirm. If you want to change the settings, click Back.

Printer: SCC-4000D

Network settings	Content
Have an IP address automatically:	No
IP Address	169.254.100.100
Subnet mask	255.255.0.0
Default gateway	169.254.100.100

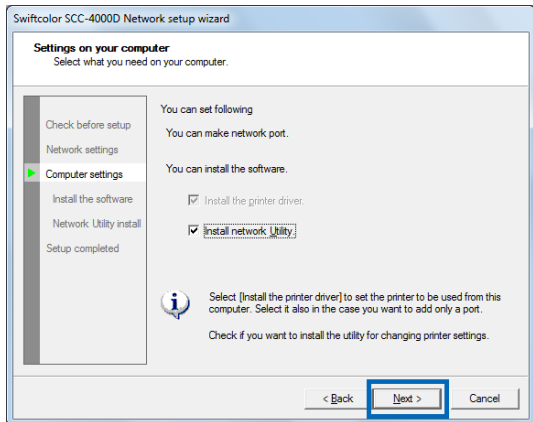
< Back Next > Cancel

Important

- If there is no equipment having DHCP server function on the network, do not check "Have an IP address automatically" checkbox.
 If there are multiple units of this printer on the network, the IP address may overlap.

Installing Software

10 Click [Next].



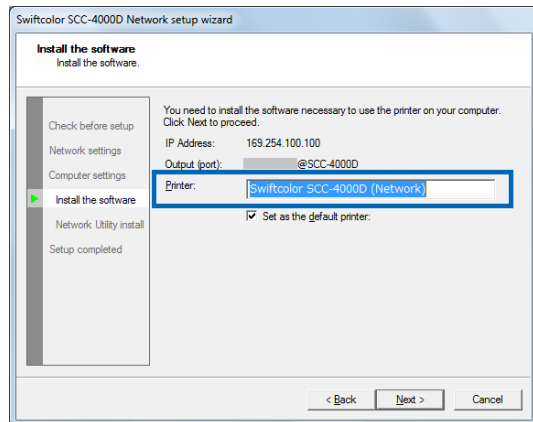
Important

- Network Utility allows you to change or confirm the IP address of the printer.

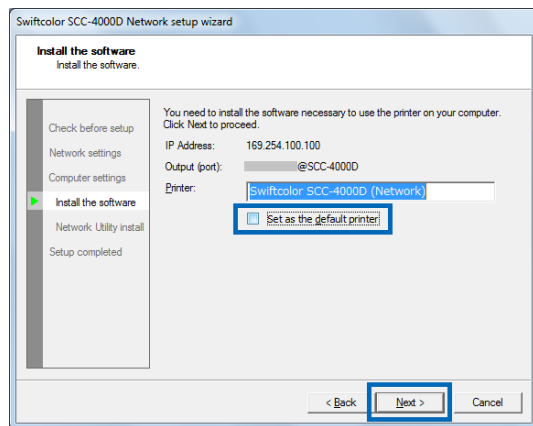
It is recommended to install Network Utility in the computer as Network Utility is required to change the IP address after Printer installation.

For how to use Network Utility, refer to “7.Appendix “Network Utility” of the User’s Guide.

11 To change the printer name, enter a new printer name in “Printer.”



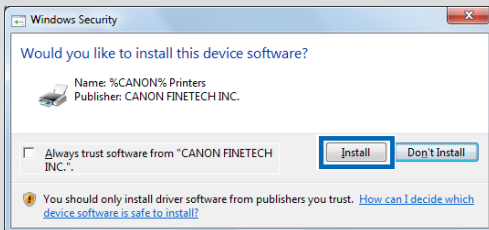
12 When not set as the default printer, uncheck the checkbox then click [Next].



The software will be installed.

Important

[Windows Security] dialog box will appear. Then, click [install].

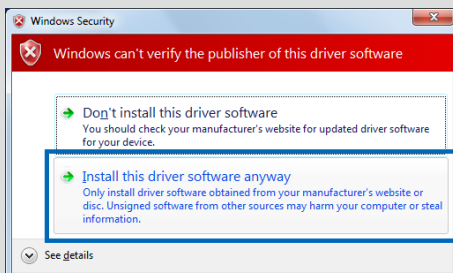


- Windows XP
Click [Continue Anyway].

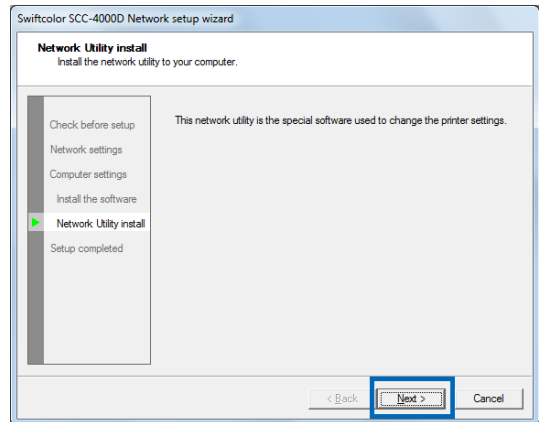


[Windows Vista]

In case there is no internet connection, the following [WindowsSecurity] message will appear. Then, click [install this printer driversoftware anyway]

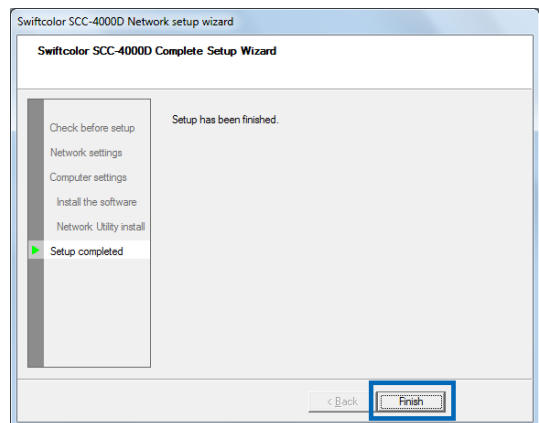


13 Click [Next].

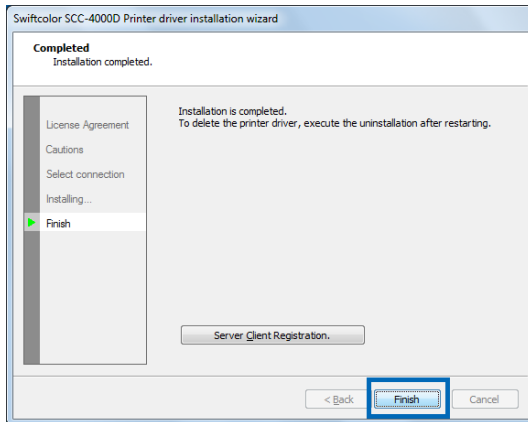


The network utility will be installed.

14 Click [Finish].

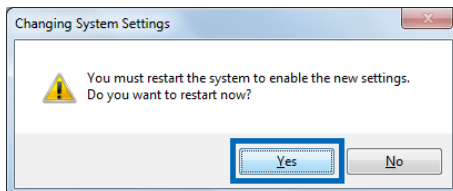


15 Click [Finish].



If you want to print from another computer via the computer in which you installed the printer driver, click [Server Client Registration].

16 Eject CD-ROM and click [Yes].



Note

- If you select [No], be sure to restart Windows before using the printer.

With that, installation of the printer driver via a LAN cable is completed.

Note

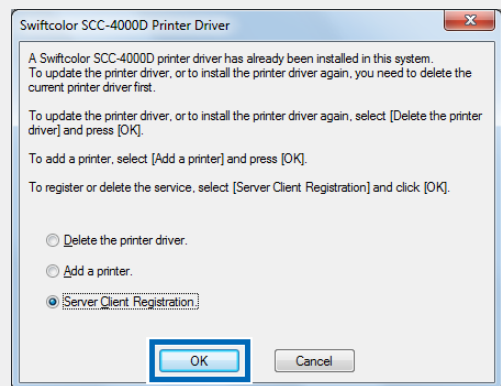
- [Server Client Registration] can be added later if the registration was not carried out at the installation.

Please follow the same step if the printer driver is added later.

Carry out the step 1 to 6 of [Installing the Printer Driver]. Then, follow the procedures in the dialog box.

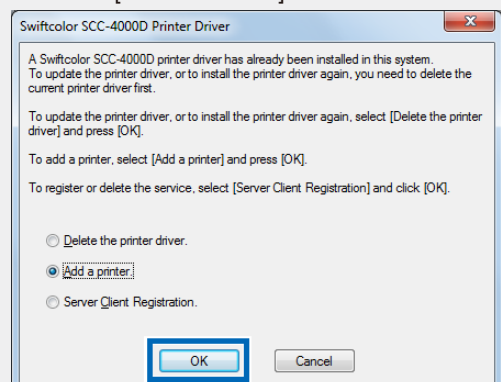
-Register the Server Client

Select [Server Client Registration] and click OK.



- Addition of the Printer Driver

Select [Printer Addition] and click OK



Installing the User's Guide

User's guide can be viewed by setting the CD-ROM in the drive; however having the guide installed to the computer is convenient for use.

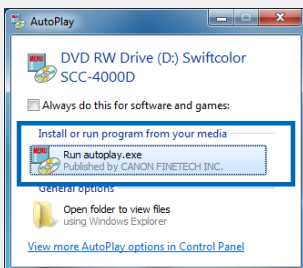
Important

- To install the guide, it is necessary to log in the computer as the user with Administrator authority. In addition, only have the user with Administrator authority have log in status.
- Have Anti-virus programs and other resident programs closed in advance.

- 1 Set the "Printer Software CD-ROM" in the computer.

Note

- If the following window appears, click "Run autoplay.exe."



- The installation start window may not appear depending on the CD-ROM drive auto run setting. In this case, go through the following.

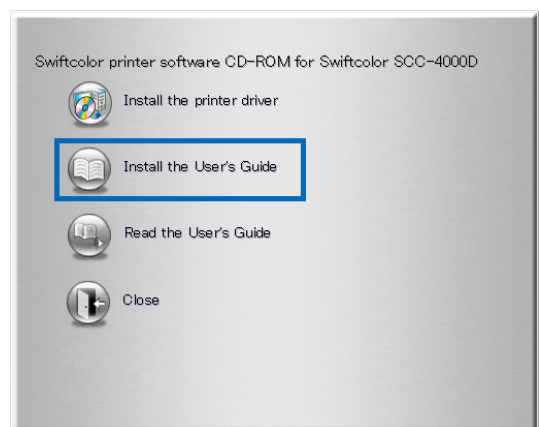
Steps:

1. Open the "Start" menu and then select "My Computer" (or "Computer").
2. Double-click the CD Drive icon.
3. Double-click "autoplay.exe."

Note

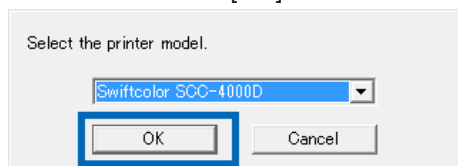
- A user account control dialog box may appear. In this case, click [Continue] or [Yes].

- 2 Click [Install the User's Guide].

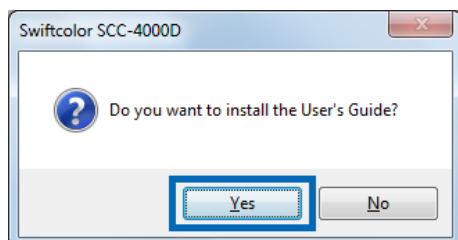


3 Select the model of the printer.

Confirm the [Swiftcolor SCC-4000D] selected and click [OK].

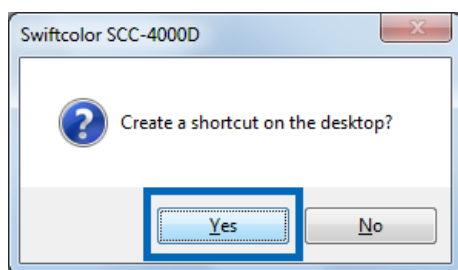


4 Click [Yes].

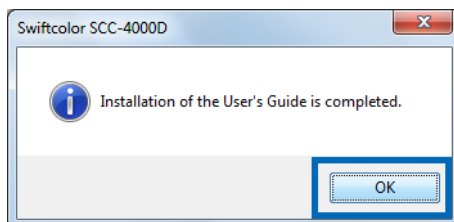


Installation of the user's guide starts.

5 To create a shortcut that opens the user's guide on the desktop, click [Yes].



6 Click [OK].



The step above completes the installation of the user's guide.

Reading the User's Guide

The installed User's Guide can be viewed by double-clicking the shortcut created on the desktop. If shortcut is not created, select User's Guide from the [Start] menu.

- 1 From the [Start] menu, select [All Programs] - [Swiftcolor SCC-4000D], click [Read the User's Guide].

- 2 User's guide will open.

Note

- To view the user's guide, Adobe Reader must be installed in advance within the computer.

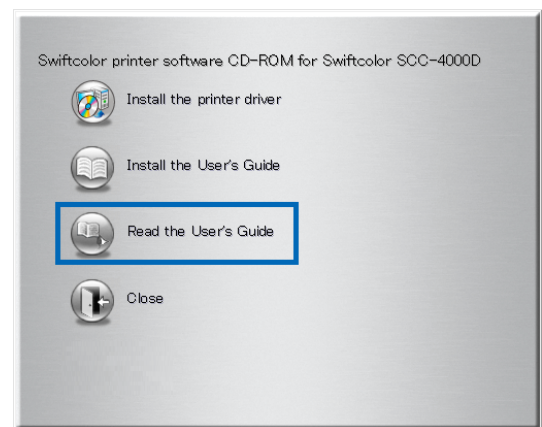
- To view the user's guide without installing.

- 1 Set the [Printer Software CD-ROM] to computer's CD-ROM drive.

Note

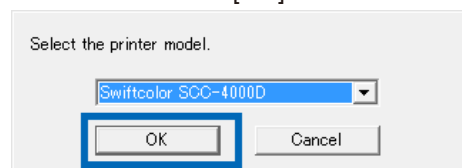
- A user account control dialog box may appear. In this case, click [Continue] or [Yes].

- 2 Click [Read the User's Guide].



- 3 Select the model of the printer.

Confirm the [Swiftcolor SCC-4000D] selected and click [OK].



- 4 User's Guide will open.

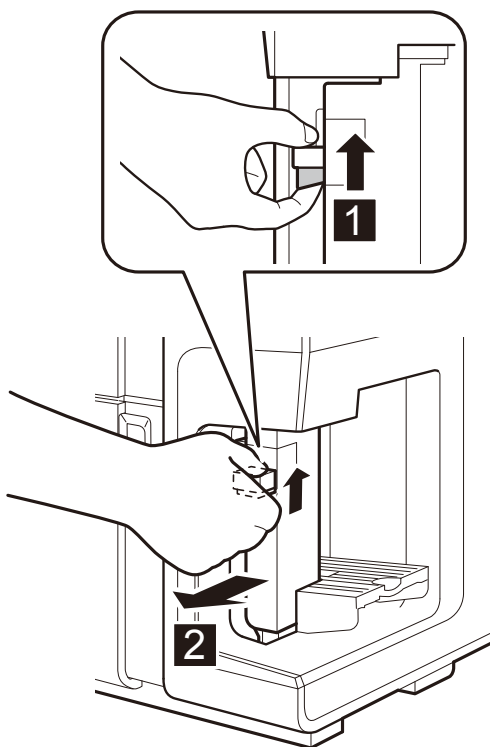
Paper Loading Procedure

This section describes how to load paper.

- 1** Make sure that the Power lamp stays lit.

If the Power lamp does not stay lit or it is not blinking, press the power key to put the printer in the power-on state.

- 2** While raising the side guide lever, move the side guide fully to the front side.

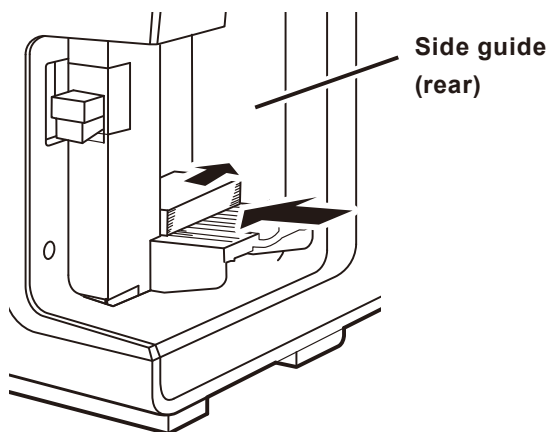


- 3** Load and insert the paper stack in the feeder lift tray until it stops.

Make sure that the paper stack is also aligned with the side guide (rear).

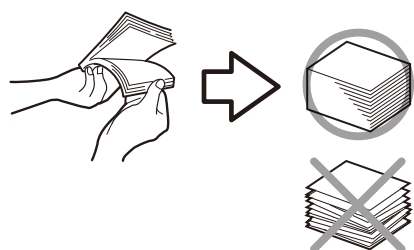
[When Loading Business Card/ID-card]

Load paper stack in long edge feed direction.



Note

- When loading new paper, flap sheets of paper well and align all edges of sheets of paper.

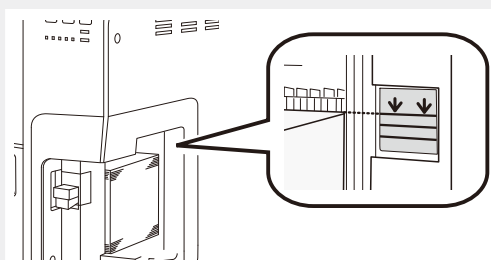


Important

- Do not print on the back of the envelope. A printing failure or other problems can result.

Note

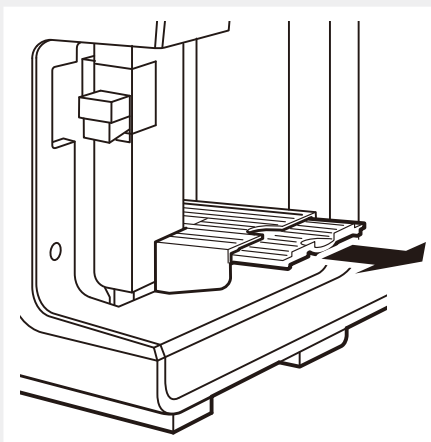
- It is recommended that paper exclusively for the color card printer be used. Using nonexclusive paper can cause bled and blurred printing or adversely impact the printer, resulting in troubles.
- When loading paper, check that top surface of the paper stack is not higher than the load limit mark.



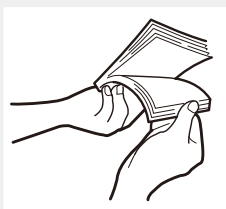
Paper Loading Procedure

Note

- When loading envelopes, pull out the auxiliary tray.



- Load envelopes with their outsides (on which an address is printed) up, in such a manner that the sealing portions are closed and pressed against the side guide (rear).
- If sheets of new paper or swelled envelopes are loaded as they are, they may not be fed smoothly. When loading sheets of new paper, flap them well and press on swelled envelopes before loading them.



- Flatten curled sheets of paper before loading them.
- The capacity of the feeder tray is as follows:

Business Card/ Postcard: 500 sheets (Thickness: 0.245mm or less.)

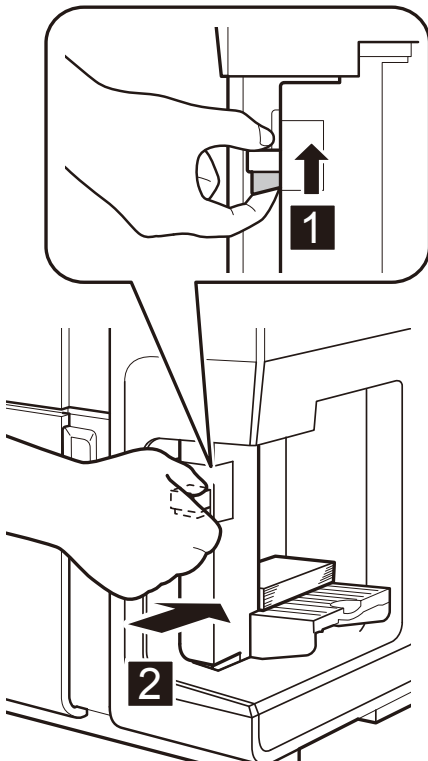
Envelope: 100 sheets

Card (Length: 148 mm or more): 100 sheets

When loading paper, check that top surface of the paper stack is not higher than the load limit mark.

If a paper feed error occurs, reduce the number of sheets loaded in the tray.

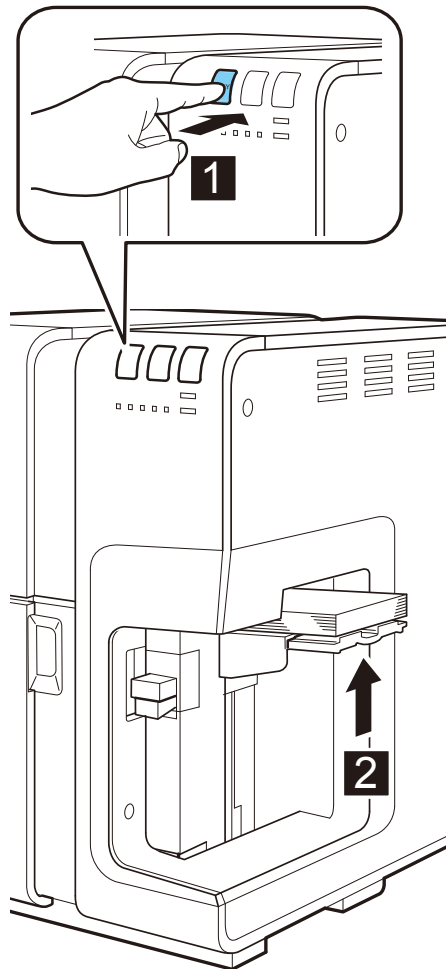
- 4** While raising the side guide lever, slowly move the side guide until it stops against paper.



Important

- Do not press the side guide against the paper stack end face too strongly. A paper jam can result.

- 5** Press the TRAY key.
- The feeder tray rises automatically.
Wait until it stops rising.



When the status lamp stays lit in green, the printer is ready for printing.

Important

- Do not operate the side guide after the feeder tray has risen. A paper jam can result.

Paper Loading Procedure

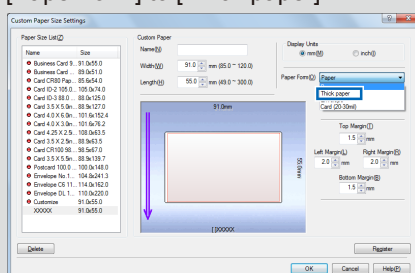
Important

■ To those who use thick paper

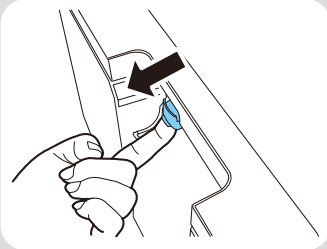
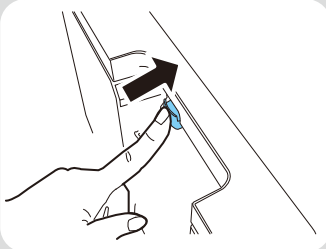
To use thick paper, set [Paper form] of the printer driver to [Thick paper] and, pull out the thick paper transport lever in the paper delivery slot.

- Setting the printer driver

On the Page Setup sheet, set [Paper form] to [Thick paper].



- Setting the thick paper transport lever

<p>When using thick paper</p> <p>Pull out the thick paper transport lever in the paper delivery slot.</p> 	<p>When using paper other than thick paper</p> <p>Push the thick paper transport lever in the paper delivery slot.</p> 
---	---

*Settings for both the printer driver and thick paper transport lever are required. If these are not set properly, an error message is displayed on the Status Monitor window and the printer does not operate.

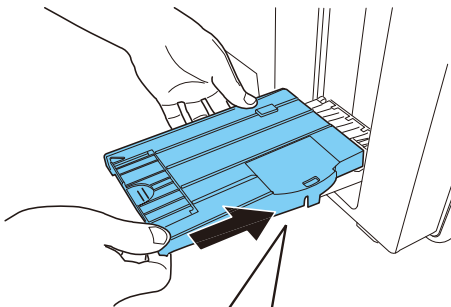
■ For the use of Plastic Card

Please follow the following procedure for the plastic card printing.

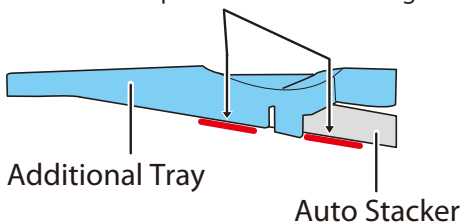
Make sure that printer is switched off.

- 1** Press the power key for at least 1 second.
Auto Stacker lowers automatically.

- 2** Load Additional tray to the auto stacker.
Set Additional Tray to Auto Stacker.
Push it until it reaches the end.

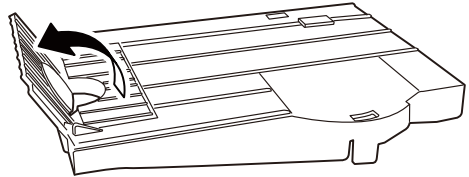


Make sure that the bottom part of Additional Tray and Auto Stacker should be located in parallel as shown in figure.



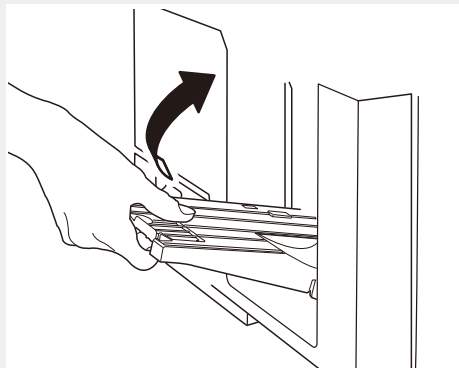
Note

- When loading 3.5x5.5inch Plastic card, stand the flap of additional tray.



Note

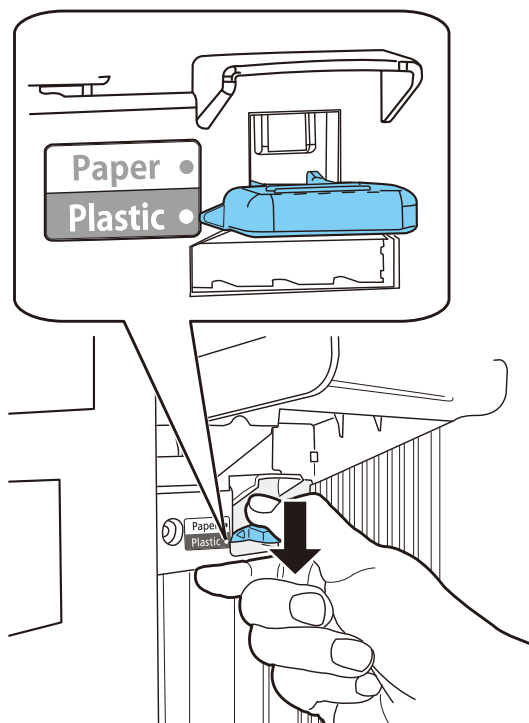
- When remove Additional Tray, pull and down it as shown in figure.



- 3** Turn on the printer.
Press the power key.

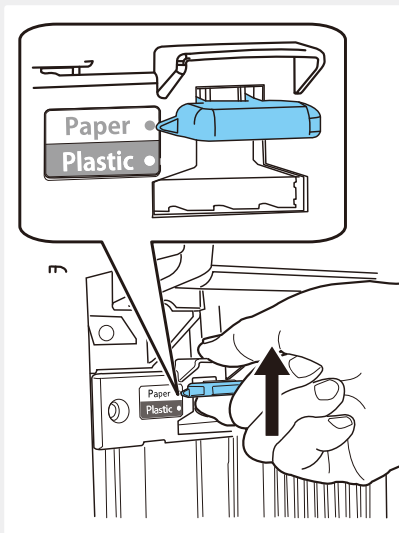
Paper Loading Procedure

- 4** Press down Feeder tray lever to [Plastic].

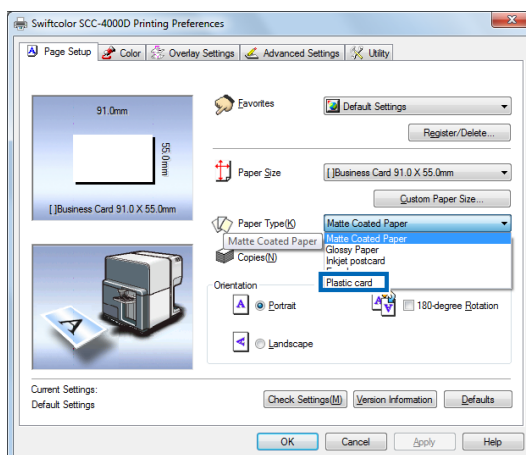


Note

- When loading paper media, set Feeder tray lever to [Paper].



- 5** Open the [Page setup] sheet in Printer driver and select [Plastic Card] for [Paper Type].

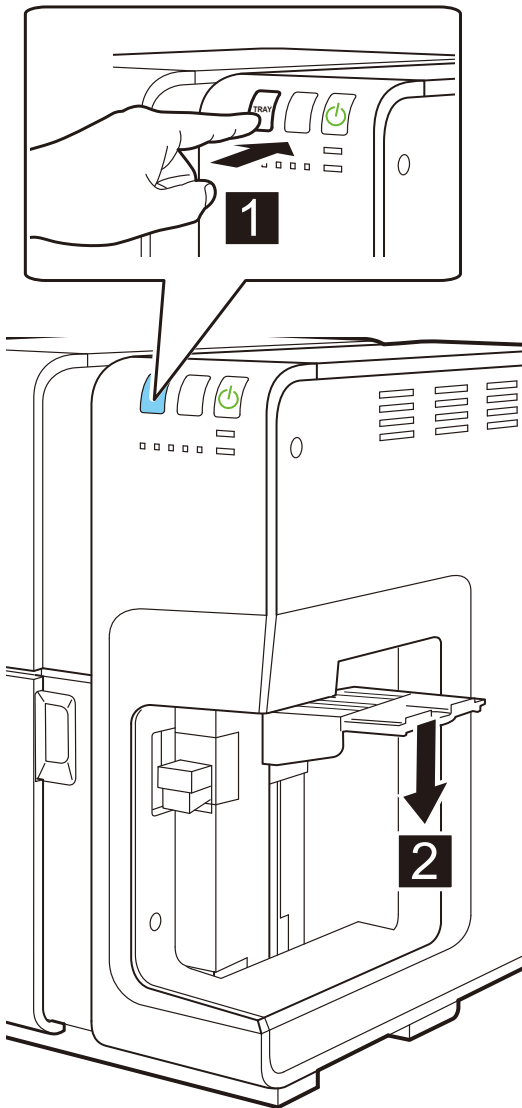


6

Press TRAY key.

The feeder lift tray lowers automatically.

Wait until it stops lowering, and then set the plastic card.



Paper Loading Procedure

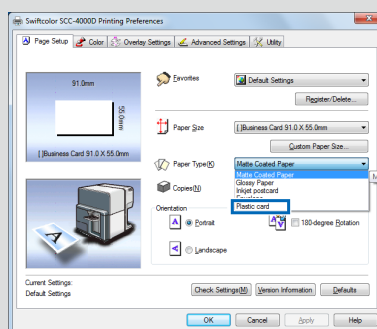
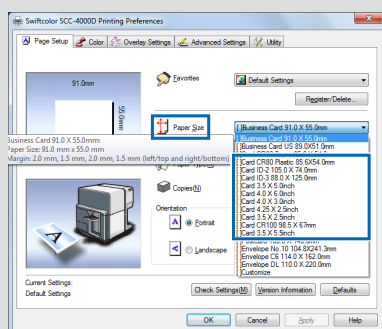
Important

- To those who use plastic card

To use thick paper or plastic card, set [Page setup] of the printer driver to [Card CR80 plastic 85.6x54.0mm][Card 4.25 x 2.5inch][Card 3.5 x 2.5inch] and, pull out the thick paper transport lever at the paper delivery slot.

- Setting the printer driver

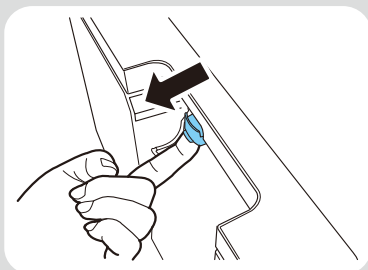
On the Page Setup sheet, set [Paper Size] and [Paper Type] to [Plastic card].



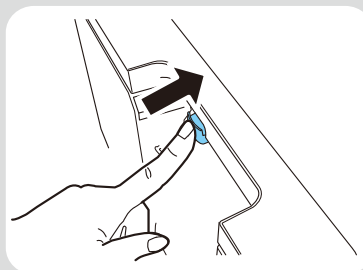
- Setting the thick paper transport lever

- | | |
|--|--|
| <ul style="list-style-type: none"> • When using plastic card (Paper length is less than 57mm) <ul style="list-style-type: none"> • [Card CR80 plastic 85.6x54.0mm] • [Card 4.25 x 2.5inch] • [Card 3.5 x 2.5inch] | <ul style="list-style-type: none"> • When using plastic card (Paper length is 57mm or more) <ul style="list-style-type: none"> • [Card ID-2 105.0 x 74.0mm] • [Card ID-3 88.0 x 125.0mm] • [Card 3.5 x 5.0inch] • [Card 4.0 x 6.0inch] • [Card 4.0 x 3.0inch] • [Card CR100 98.5 x 67mm] • [Card 3.5 x 5.5inch] |
|--|--|

Pull out the thick paper transport lever in the paper delivery slot.



Push the thick paper transport lever in the paper delivery slot.



*Settings for both printer driver and thick paper transport lever are required. If these are not set properly, an error message is displayed on the Status Monitor window and the printer does not operate.

Specifications

■ Printer

Printing method	Inkjet
Print colors	Full color
Output resolution	1200 dpi × 1200 dpi
Printing speed	Business Card, ID-1(Plastic card): 100 sheets/min. Postcard: 45 sheets/min. Envelope: 28 sheets/min. Plastic card(3.5x5.5inch):50 sheets/min
Printable area	107.8 mm (W) × 297.0 mm (L)
Print margin (in relation to paper transport direction)	Top/Bottom: 1.5 mm Left/Right: 2.0 mm
Print head	5,097 nozzles (effective nozzles)
Paper	Matte coated paper, Glossy paper, Inkjet postcard, Envelope, Plastic card
Paper size	Width: 85 mm - 120 mm Length: 49 mm - 300 mm
Paper thickness	Business Card, Postcard, Plastic card: 0.21 mm - 0.76 mm Envelope: 0.28 mm - 0.32 mm
Paper feed capacity	Business Card, Postcard: 500 sheets (Thickness: 0.245 mm or less) Envelope: 100 sheets Card, Plastic card (Length:148 mm or more): 100 sheets
Ink used	Water based dye-ink Yellow (Y), Magenta (M), Cyan (C), and Black (Bk)
Interface	Hi-Speed USB, 1000BASE-T/100BASE-TX/10BASE-T
Operating noise	Approx 58dB (A) or less
Installation environment	Temperature: 15 degrees Celsius - 30 degrees Celsius Humidity: 10% - 80% (with no condensation)
Power supply	AC 100-240 V, 50/60 Hz
Power consumption	Maximum power consumption: 229 W Sleep mode: 8.5 W
Dimensions	595 mm (W) × 410 mm (D) × 464 mm (H)
Weight	Approx 25 kg (without ink tanks and printhead)

- This printer employs a dye ink system. The colors in printouts may deteriorate due to chemical reactions caused by exposure to normal infrared light, nitrous or sulfuric fumes and other oxidizing chemicals in the air.
- To conserve the consumption of printing paper, the printer can print on the reverse side. To print on both sides of paper, use paper suited for duplex printing.

4Y8-8053-030



Contact Information

Swiftcolor/Kanematsu
KANEMATSU USA INC.
100 Randolph Road Somerset,
NJ 08873 USA
URL : www.swiftcolor.com
E-mail: info@swiftcolor.com

Kanematsu G.m.b.H
Duesseldorf Head Office
Oststrasse 34, D-40211, Duesseldorf, Germany
URL : www.swiftcolor.com
E-mail: info@swiftcolor.com

