

*Swiftpro*<sup>TM</sup>



## Forensic Sheet

### 2D/3D

The blue hexagonal pattern in the background will be imaged on a 2nd plane giving the design a 3D depth.

### 90° Viewable Micro Image

This globe will diffract when the entire image is turned in a portrait orientation.

**Two Channel Flip**  
These globes will visibly alternate.



Flip 1

Flip 2

Scaled  
2000%

### Black/White Switch Image

This **SECURE/VALID** border will have a matted look that gives it a positive & negative diffraction effect.

### Guilloche Fine Lines

This guilloche design will have kinetic movement.

### Lens Effect

A creation of multiple focused real and virtual magnified images of the illuminating light source. The circular image rotates and moves as the observer moves, creating a dynamic visual effect.

### Chrome Effect

This graphic element will look embossed.

### Pseudo Color

These hexagonal elements will diffract in red, green, & blue when viewed at the optimum angle.

### 90° Viewable

The magenta hexagonal outline will diffract when the entire image is turned in a portrait orientation.

### Morph Effect

The star morphs into a circle through kinetic movement.

Scaled 2000%

### Micro Text

**AUTHENTIC** around the *Lens Effect* will have a character height of .008". The bottom word will have an intentional error. the E will be facing the wrong way.

Scaled  
2000%

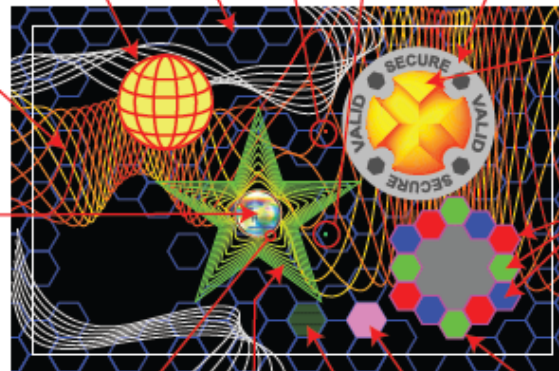
### Nano Text

This hexagon shape will have pattern of the word **GENUINE** with a character height of .004".

**OK**

### Laser Retrievable Covert Text

The letters **"OK"** will be hidden within this hexagonal shape and can only be viewed with a laser device in the right reading orientation.



# Security Feature Solutions:

**Swiftpro™**

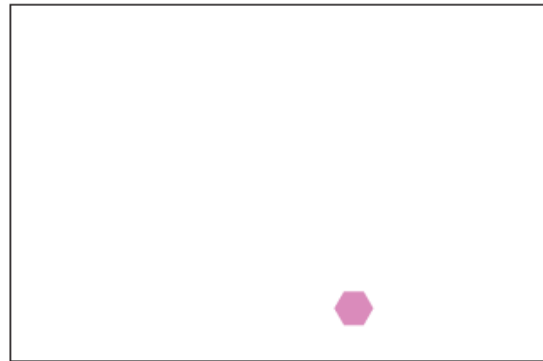


## LEVEL 1 : OVERT

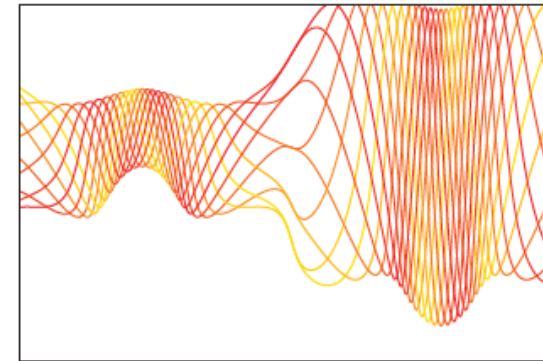
These features are viewable with the naked eye,  
Quick and easy way to detect a counterfeit product.

1. Two dimensional holographic design
2. Kinetic effects
3. Micro Text – Ranging from .010 inches in letter height to .008 inches in letter height
4. Intentional error in micro text

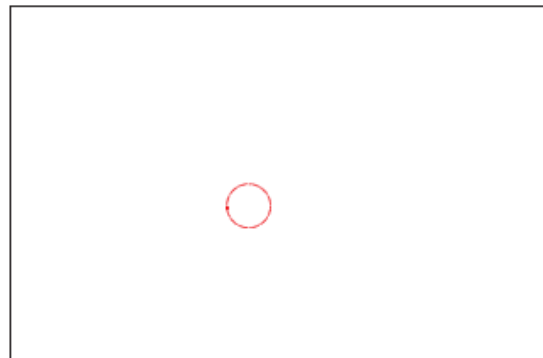
## LEVEL 1 : OVERT



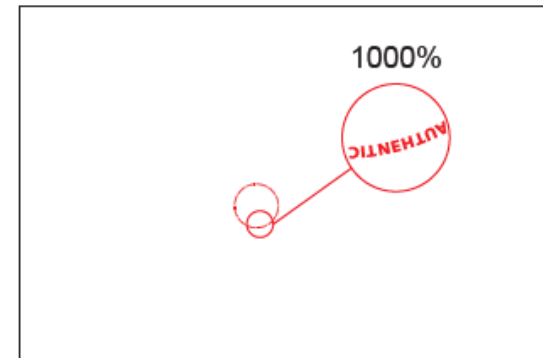
1 2 dimensional holographic design



2 Kinetic effects



3 Micro Text



4 Intentional error in micro text



# Security Feature Solutions:

**Swiftpro™**



## LEVEL 2 : COVERT

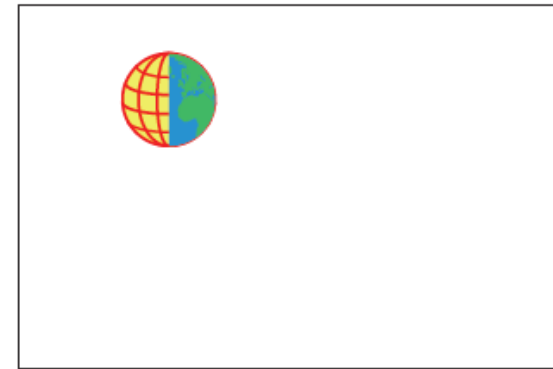
These features are viewed with a basic tool like a UV light or magnifying glass.

1. Two dimensional holographic design
2. Kinetic effects
3. Micro Text – Ranging from .010 inches in letter height to .008 inches in letter height
4. Intentional error in micro text
5. Guilloche fine line features
6. Two Channel (Flip) Image (Available in 90 degree viewable also)
7. Black / White color shift
8. 2D/ 3D

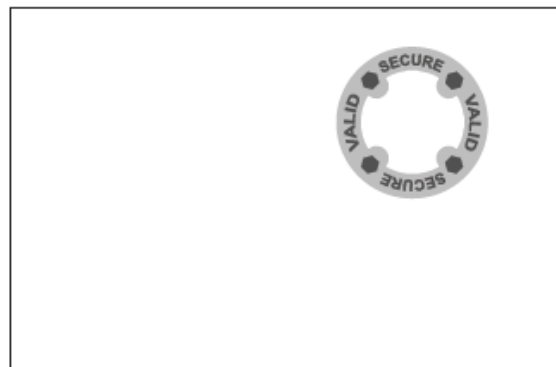
## LEVEL 2 : COVERT



5 Guilloche fine line features



6 Two Channel (flip) image



7 Black/white color shift



8 2D/3D

# Security Feature Solutions:

**Swiftpro™**



## LEVEL 3 : FORENSIC

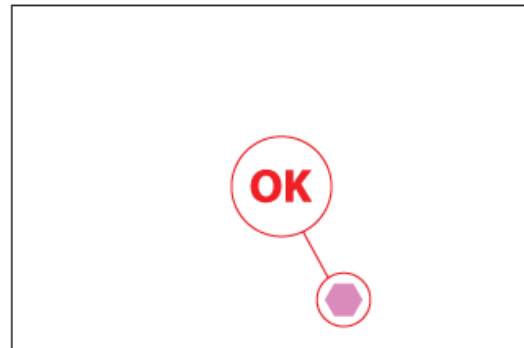
These security features can only be viewed with laboratory equipment and by a trained professional.

1. Two dimensional holographic design
2. Kinetic effects
3. Micro Text – Ranging from .010 inches in letter height to .008 inches in letter height
4. Intentional error in micro text
5. Guilloche fine line features
6. Two Channel (Flip) Image (Available in 90 degree viewable also)
7. Black / White color shift
8. 2D/ 3D
9. Latent image (Ghost image)
10. Laser retrievable covert text (CLR)
11. 3D Chrome effect
12. 90° viewable outline
13. Pseudo color
14. Morphing effect
15. Nano text – Ranging from .006 inches in letter height to .001 inches in letter height
16. Lens effects
17. Nano Image – up to 20,000 DPI with a minimum size of 0.02"

## LEVEL 3 : FORENSIC



9 Latent image (ghost image)



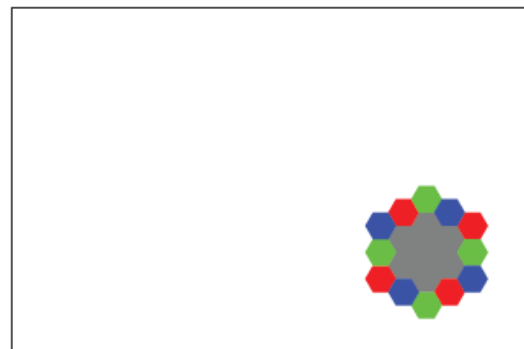
10 Laser retrievable covert text (CLR)



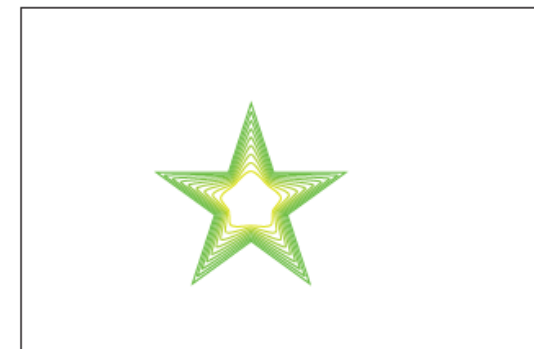
11 3D chrome effect



12 90° viewable outline



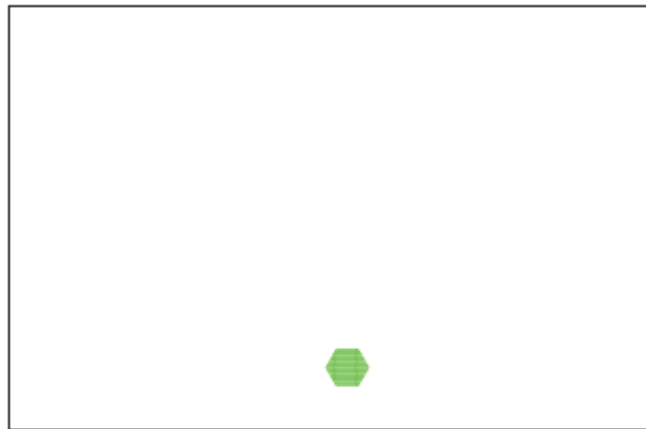
13 Pseudo color



14 Morphing effect

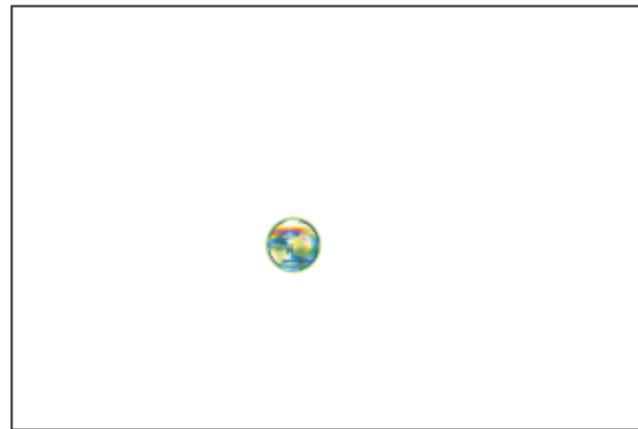


## LEVEL 3 : FORENSIC (CONTINUED)



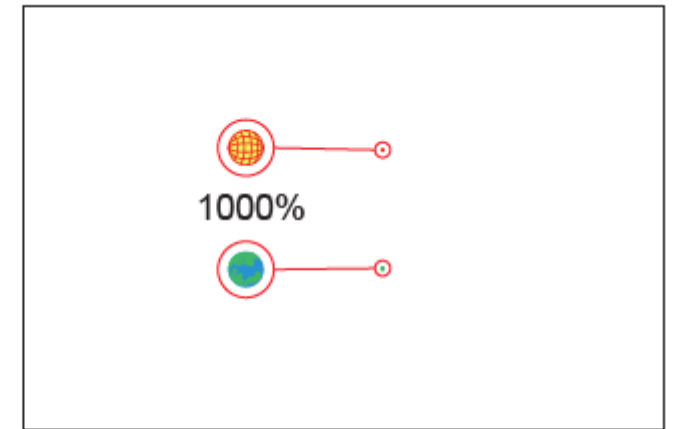
15

Nano text



16

Lens effects



17

Nano image



## ADDITIONAL FEATURES

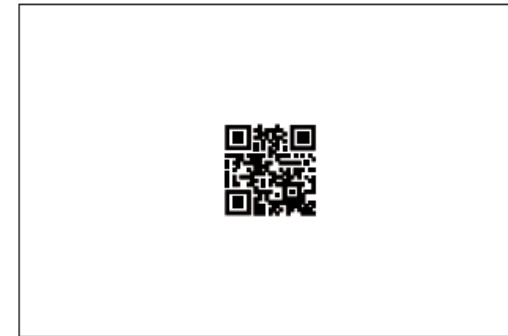
1. UV ink (Red, green o blue)
2. QR codes or data matrix codes in either a holographic or printed format Sequential numbering
3. Individual barcodes

## ADDITIONAL FEATURES



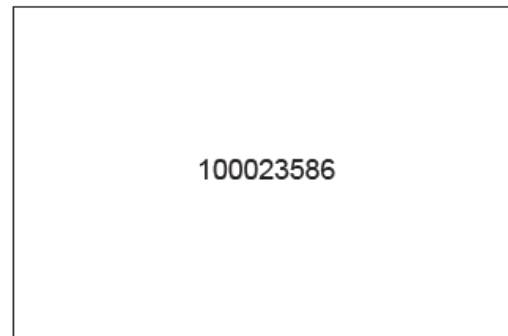
1

UV ink



2

QR codes/data matrix codes



3

Sequential numbering



4

Individual bar codes