

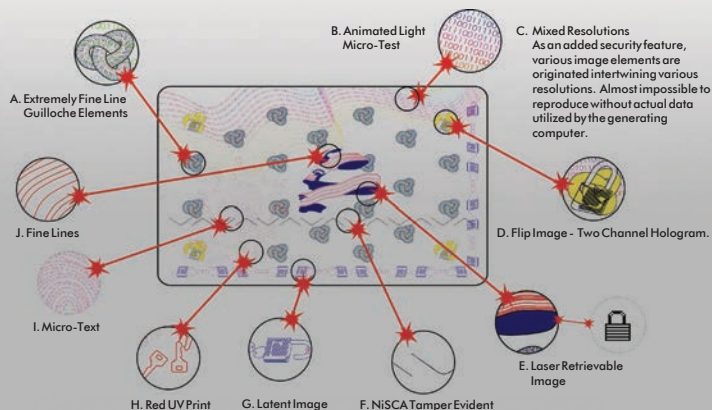
# TEAM NISCA

Plastic Card Printers

Applies to All Printers

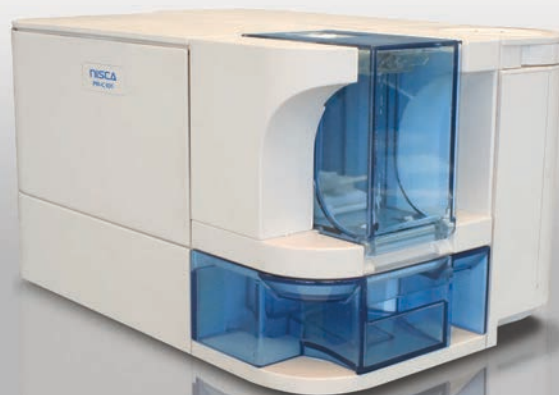


# The More Security Features, the Less Counterfeiting.



## PR-C101 Quality and Reliability in a Single-Sided, Entry Level Printer

- ✓ 24-bit Color
- ✓ Removable Card Hopper
- ✓ High Durability, Low Maintenance,
- ✓ 50,000 Cards Mean Time Between Failure (MTBF)
- ✓ Compact and Light Weight
- ✓ Rotating LCD Panel



**Smart Printers. Affordable Solutions.**



## **PR-C151**

**Dual-Sided, Direct-to-Card  
Printer with Laminator Option**

- ✓ 24-bit Color
- ✓ Dual Sided Printing
- ✓ Built-in Ethernet Interface
- ✓ 100,000 Mean Time Between Failure (MTBF)
- ✓ Supports Magnetic & Contactless Encoding
- ✓ Optional Laminator Available



# A Printer that Meets Your Needs.

## **PR-C201** Retransfer Printer, Over-the-Edge Printing, Full Bleed

- ✓ 24-bit Color
- ✓ 600 DPI
- ✓ High Durability, Low Maintenance
- ✓ Built-in Ethernet Interface
- ✓ 100,000 Cards Mean Time Between Failure (MTBF)
- ✓ Supports Magnetic, Contactless & IC Contact Encoding
- ✓ Optional Laminator Available



# Reliable, affordable, high quality output plastic card printers. Secure identity solutions for all markets and applications.



## Corporations/Organizations

- Employee badges
- Visitor management
- Access control
- Time attendance
- Business cards

## Education

- K-12 school ID cards
- College & university student ID cards
- Photo IDs for faculty and staff
- School visitor badges
- Bookstore, cafeteria & media transactions

## Government

- Driver's license
- Credentials for employees, officials, military, visitors
- National ID cards
- National healthcare
- Voter, first responder & law enforcement IDs

## Other Applications

- Loyalty cards
- Membership cards
- Hospital employee badges
- Transit passes
- Event badges



PRODUCT SPECIFICATIONS	PR-C101	PR-C151	PR-C201
DPI	300	300	600
24-bit continuous tone printing	Yes	Yes	Yes
Dual-sided printing	No	Yes	Yes
Inline encoding options	MIFARE, Desfire	Magnetic & Contactless	Magnetic, Contactless & IC Contact Encoding
Separate image and function memory	Yes	Yes	Yes
Extended image memory, MB	Yes, 8	Yes, 32	Yes, 64
Printing speed YMCKO <sup>1</sup> , cards/hour	134	128	145
Printing speed resin, cards/hour	424	379	
Printing speed single-sided w/ lamination, cards/hour	N/A	144	160
Printing speed double-sided w/ lamination, cards/hour	N/A	60	100
Ultraviolet printing capability	No	Yes	Yes
Micro printing capability	Yes	Yes	Yes
Built in Ethernet interface	No	Yes	Yes
Card size	CR80	CR80	CR79 & CR80
Card thickness, mil	30, 10 <sup>2</sup>	20 to 50, 10 <sup>2</sup>	20 to 50
Card input/output hopper	100/30	100/100	250/250
Windows 2000/XP/VISTA/7/8/32 or 64 bit Mac OSX 10.5 and above	Yes <sup>3</sup>	Yes	Yes
Security overlamine add-on module	No	Yes PR-L151	Yes PR-L201

<sup>1</sup> Due to policy of continuous development, we reserve the right to alter details of specification and equipment without notice.

<sup>2</sup> Optional 10 mil kit available (PR5600-THN)

<sup>3</sup> Mac driver must be purchased from DVR Consulting, Inc. for PR-C101 ([www.badges.com](http://www.badges.com)).

<sup>4</sup> Please contact Team NISCA for more information.